

MCT4 Polyclonal Antibody

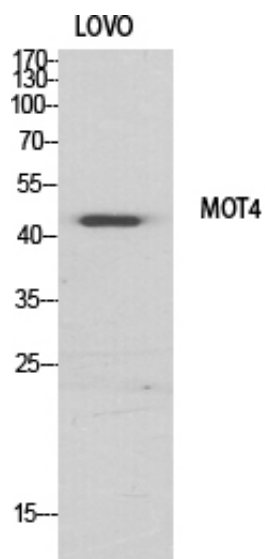
Catalog_no :	AT2685
Applications :	WB,ELISA
Reactivity :	Human,Mouse,Rat
Category :	抗原抗体
Size :	100µg/50µg/20µg
Gene_name :	SLC16A3
Protein_name :	Monocarboxylate transporter 4
Humangene_id :	9123
Humanswissprot_no :	O15427
Mousegene_id :	80879
Mouseswissprot_no :	P57787
Ratgene_id :	80878
Ratswissprot_no :	O35910
Immunogen :	The antiserum was produced against synthesized peptide derived from human MOT4. AA range:233-282
Specificity :	MCT4 Polyclonal Antibody detects endogenous levels of MCT4 protein.
Formulation :	Liquid in PBS containing 50% glycerol, 0.5% BSA and 0.02% sodium azide.
Source :	Rabbit
Dilution :	Western Blot: 1/500 - 1/2000. ELISA: 1/40000. Not yet tested in other applications.
Purification :	The antibody was affinity-purified from rabbit antiserum by affinity-chromatography using epitope-specific immunogen.
Concentration :	1 mg/ml
Storage_stability :	-20°C/1 year
Msds :	MSDS_Antibody.pdf



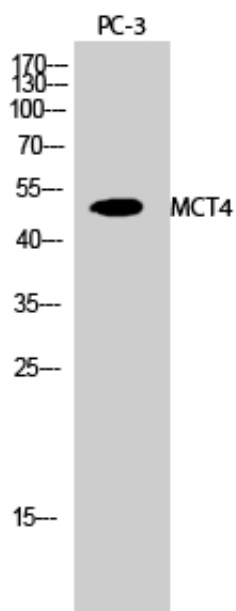
Other_name : SLC16A3; MCT4; Monocarboxylate transporter 4; MCT 4; Solute carrier family 16 member 3

Molecular Weight : 49KD

Product Images



Western Blot analysis of various cells using MCT4
Polyclonal Antibody diluted at 1 : 500



Western Blot analysis of PC-3 cells using MCT4
Polyclonal Antibody diluted at 1 : 500