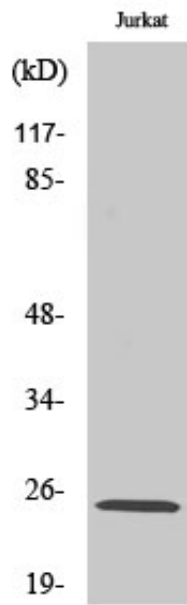




MDFI Polyclonal Antibody

Catalog_no :	AT2688
Applications :	WB,ELISA
Reactivity :	Human,Mouse
Category :	抗原抗体
Size :	100µg/50µg/20µg
Gene_name :	MDFI
Protein_name :	MyoD family inhibitor
Humangene_id :	4188
Humanswissprot_no :	Q99750
Mousegene_id :	17240
Mouseswissprot_no :	P70331
Immunogen :	The antiserum was produced against synthesized peptide derived from human MDFI. AA range:103-152
Specificity :	MDFI Polyclonal Antibody detects endogenous levels of MDFI protein.
Formulation :	Liquid in PBS containing 50% glycerol, 0.5% BSA and 0.02% sodium azide.
Source :	Rabbit
Dilution :	Western Blot: 1/500 - 1/2000. ELISA: 1/10000. Not yet tested in other applications.
Purification :	The antibody was affinity-purified from rabbit antiserum by affinity-chromatography using epitope-specific immunogen.
Concentration :	1 mg/ml
Storage_stability :	-20°C/1 year
Msds :	MSDS_Antibody.pdf
Other_name :	MDFI; MyoD family inhibitor; Myogenic repressor I-mf
Molecular Weight :	25KD

Product Images



Western Blot analysis of various cells using MDFl Polyclonal Antibody