

MDM1 Polyclonal Antibody

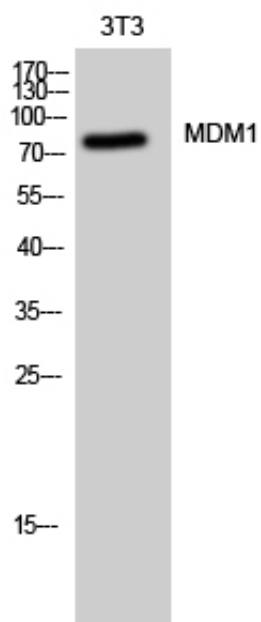
Catalog_no :	AT2689
Applications :	WB,ELISA
Reactivity :	Human,Mouse,Rat
Category :	抗原抗体
Size :	100µg/50µg/20µg
Gene_name :	MDM1
Protein_name :	Nuclear protein MDM1
Humangene_id :	56890
Humanswissprot_no :	Q8TC05
Mousegene_id :	17245
Mouseswissprot_no :	Q9D067
Ratgene_id :	314859
Ratswissprot_no :	Q5PQN4
Immunogen :	The antiserum was produced against synthesized peptide derived from human MDM1. AA range:665-714
Specificity :	MDM1 Polyclonal Antibody detects endogenous levels of MDM1 protein.
Formulation :	Liquid in PBS containing 50% glycerol, 0.5% BSA and 0.02% sodium azide.
Source :	Rabbit
Dilution :	Western Blot: 1/500 - 1/2000. ELISA: 1/5000. Not yet tested in other applications.
Purification :	The antibody was affinity-purified from rabbit antiserum by affinity-chromatography using epitope-specific immunogen.
Concentration :	1 mg/ml
Storage_stability :	-20°C/1 year
Msds :	MSDS_Antibody.pdf



Other_name : MDM1; Nuclear protein MDM1

Molecular Weight : 80KD

Product Images



Western Blot analysis of 3T3 cells using MDM1 Polyclonal Antibody cells nucleus extracted by Minute TM Cytoplasmic and Nuclear Fractionation kit (SC-003, Inventbiotech, MN, USA).