

## MDM2 Polyclonal Antibody

Catalog_no :	AT2692
Applications :	WB,IHC-p,IF,ELISA
Reactivity :	Human,Mouse,Monkey
Category :	抗原抗体
Size :	100µg/50µg/20µg
Gene_name :	MDM2
Protein_name :	E3 ubiquitin-protein ligase Mdm2
Humangene_id :	<a href="#">4193</a>
Humanswissprot_no :	<a href="#">Q00987</a>
Mousegene_id :	<a href="#">17246</a>
Mouseswissprot_no :	<a href="#">P23804</a>
Immunogen :	The antiserum was produced against synthesized peptide derived from human MDM2. AA range:132-181
Specificity :	MDM2 Polyclonal Antibody detects endogenous levels of MDM2 protein.
Formulation :	Liquid in PBS containing 50% glycerol, 0.5% BSA and 0.02% sodium azide.
Source :	Rabbit
Dilution :	Western Blot: 1/500 - 1/2000. Immunohistochemistry: 1/100 - 1/300. Immunofluorescence: 1/200 - 1/1000. ELISA: 1/5000. Not yet tested in other applications.
Purification :	The antibody was affinity-purified from rabbit antiserum by affinity-chromatography using epitope-specific immunogen.
Concentration :	1 mg/ml
Storage_stability :	-20°C/1 year
Msds :	<a href="#">MSDS_Antibody.pdf</a>
Other_name :	MDM2; E3 ubiquitin-protein ligase Mdm2; Double minute 2 protein; Hdm2; Oncoprotein Mdm2; p53-binding protein Mdm2

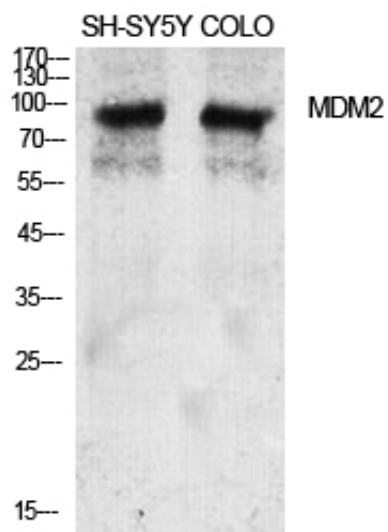


Molecular  
Weight :

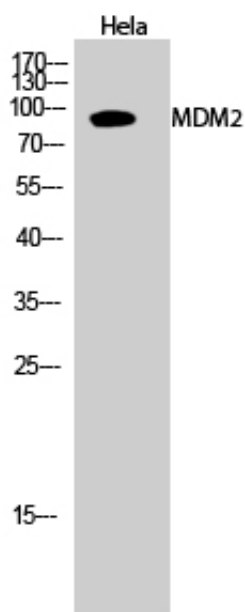
90KD

---

## Product Images



Western Blot analysis of various cells using MDM2 Polyclonal Antibody diluted at 1 : 2000



Western Blot analysis of HeLa cells using MDM2 Polyclonal Antibody diluted at 1 : 2000