

MEF-2 Polyclonal Antibody

| | |
|-------------------|--------------------------------------------------------------------------------------------------------------------------------------------------------------|
| Catalog_no : | AT2699 |
| Applications : | WB,IHC-p,IF,ELISA |
| Reactivity : | Human,Mouse,Rat |
| Category : | 抗原抗体 |
| Size : | 100µg/50µg/20µg |
| Gene_name : | MEF2A |
| Protein_name : | Myocyte-specific enhancer factor 2A |
| Humangene_id | 4205 |
| : | |
| Humanswissprot | Q02078 |
| _no : | |
| Mousegene_id : | 17258 |
| Mouseswissprot | Q60929 |
| _no : | |
| Ratgene_id : | 309957 |
| Ratswissprot_no | Q2MJT0 |
| : | |
| Immunogen : | The antiserum was produced against synthesized peptide derived from human MEF2A. AA range:374-423 |
| Specificity : | MEF-2 Polyclonal Antibody detects endogenous levels of MEF-2 protein. |
| Formulation : | Liquid in PBS containing 50% glycerol, 0.5% BSA and 0.02% sodium azide. |
| Source : | Rabbit |
| Dilution : | Western Blot: 1/500 - 1/2000. Immunohistochemistry: 1/100 - 1/300. Immunofluorescence: 1/200 - 1/1000. ELISA: 1/40000. Not yet tested in other applications. |
| Purification : | The antibody was affinity-purified from rabbit antiserum by affinity-chromatography using epitope-specific immunogen. |
| Concentration : | 1 mg/ml |
| Storage_stability | -20°C/1 year |
| : | |

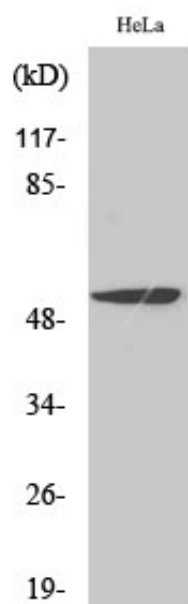


Msd : MSDS_Antibody.pdf

Other_name : MEF2A; MEF2; Myocyte-specific enhancer factor 2A; Serum response factor-like protein 1

Molecular Weight : 55KD

Product Images



Western Blot analysis of various cells using MEF-2 Polyclonal Antibody diluted at 1 : 1000 cells nucleus extracted by Minute TM Cytoplasmic and Nuclear Fractionation kit (SC-003, Invent biotech, MN, USA).