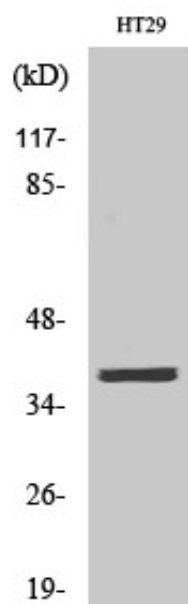




## MEF-2B Polyclonal Antibody

Catalog_no :	<u>AT2701</u>
Applications :	<u>WB,IHC-p,ELISA</u>
Reactivity :	<u>Human,Mouse</u>
Category :	<u>抗原抗体</u>
Size :	<u>100µg/50µg/20µg</u>
Gene_name :	<u>MEF2B</u>
Protein_name :	<u>Myocyte-specific enhancer factor 2B</u>
Humangene_id :	<u><a href="#">4207</a></u>
Humanswissprot_no :	<u><a href="#">Q02080</a></u>
Mouseswissprot_no :	<u><a href="#">O55087</a></u>
Immunogen :	<u>The antiserum was produced against synthesized peptide derived from human MEF2B. AA range:51-100</u>
Specificity :	<u>MEF-2B Polyclonal Antibody detects endogenous levels of MEF-2B protein.</u>
Formulation :	<u>Liquid in PBS containing 50% glycerol, 0.5% BSA and 0.02% sodium azide.</u>
Source :	<u>Rabbit</u>
Dilution :	<u>Western Blot: 1/500 - 1/2000. Immunohistochemistry: 1/100 - 1/300. ELISA: 1/10000. Not yet tested in other applications.</u>
Purification :	<u>The antibody was affinity-purified from rabbit antiserum by affinity-chromatography using epitope-specific immunogen.</u>
Concentration :	<u>1 mg/ml</u>
Storage_stability :	<u>-20°C/1 year</u>
Msds :	<u>MSDS_Antibody.pdf</u>
Other_name :	<u>MEF2B; XMEF2; Myocyte-specific enhancer factor 2B; RSRFR2; Serum response factor-like protein 2</u>
Molecular Weight :	<u>38KD</u>

## Product Images



Western Blot analysis of various cells using MEF-2B Polyclonal Antibody cells nucleus extracted by Minute TM Cytoplasmic and Nuclear Fractionation kit (SC-003, Inventbiotech, MN, USA).