



MEF-2C Polyclonal Antibody

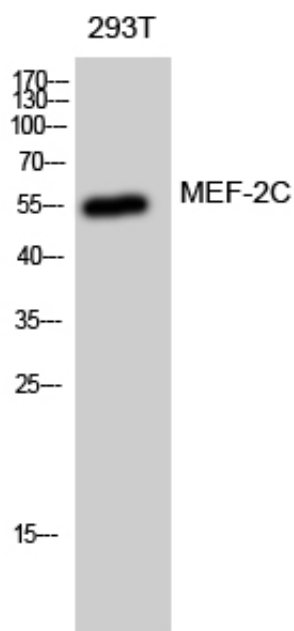
Catalog_no :	AT2702
Applications :	WB,IHC-p,ELISA
Reactivity :	Human,Mouse
Category :	抗原抗体
Size :	100µg/50µg/20µg
Gene_name :	MEF2C
Protein_name :	Myocyte-specific enhancer factor 2C
Humangene_id :	4208
Humanswissprot_no :	Q06413
Mousegene_id :	17260
Mouseswissprot_no :	Q8CFN5
Immunogen :	The antiserum was produced against synthesized peptide derived from human MEF2C. AA range:362-411
Specificity :	MEF-2C Polyclonal Antibody detects endogenous levels of MEF-2C protein.
Formulation :	Liquid in PBS containing 50% glycerol, 0.5% BSA and 0.02% sodium azide.
Source :	Rabbit
Dilution :	Western Blot: 1/500 - 1/2000. Immunohistochemistry: 1/100 - 1/300. ELISA: 1/40000. Not yet tested in other applications.
Purification :	The antibody was affinity-purified from rabbit antiserum by affinity-chromatography using epitope-specific immunogen.
Concentration :	1 mg/ml
Storage_stability :	-20°C/1 year
Msds :	MSDS_Antibody.pdf
Other_name :	MEF2C; Myocyte-specific enhancer factor 2C
Molecular Weight :	51KD



专注二抗产品

Biodragon旗下品牌

Product Images



Western Blot analysis of 293T cells using MEF-2C Polyclonal Antibody diluted at 1 : 1000 cells nucleus extracted by Minute TM Cytoplasmic and Nuclear Fractionation kit (SC-003, Invent biotech, MN, USA).