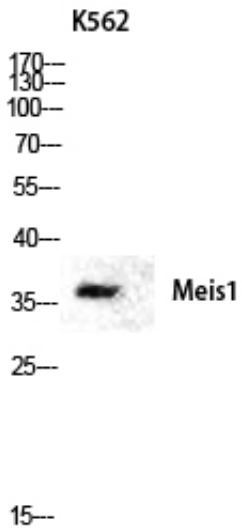




Meis1 Polyclonal Antibody

Catalog_no :	AT2706
Applications :	WB,ELISA
Reactivity :	Human,Mouse
Category :	抗原抗体
Size :	100µg/50µg/20µg
Gene_name :	MEIS1
Protein_name :	Homeobox protein Meis1
Humangene_id :	4211
Humanswissprot_no :	O00470
Mousegene_id :	17268
Mouseswissprot_no :	Q60954
Immunogen :	The antiserum was produced against synthesized peptide derived from human Meis1. AA range:229-278
Specificity :	Meis1 Polyclonal Antibody detects endogenous levels of Meis1 protein.
Formulation :	Liquid in PBS containing 50% glycerol, 0.5% BSA and 0.02% sodium azide.
Source :	Rabbit
Dilution :	Western Blot: 1/500 - 1/2000. ELISA: 1/40000. Not yet tested in other applications.
Purification :	The antibody was affinity-purified from rabbit antiserum by affinity-chromatography using epitope-specific immunogen.
Concentration :	1 mg/ml
Storage_stability :	-20°C/1 year
Msds :	MSDS_Antibody.pdf
Other_name :	MEIS1; Homeobox protein Meis1
Molecular Weight :	37KD

Product Images



Western blot analysis of K562 lysis using Meis1 antibody. Antibody was diluted at 1:1000 cells nucleus extracted by Minute TM Cytoplasmic and Nuclear Fractionation kit (SC-003, Inventbiotech, MN, USA).