

MEK Kinase-3 Polyclonal Antibody

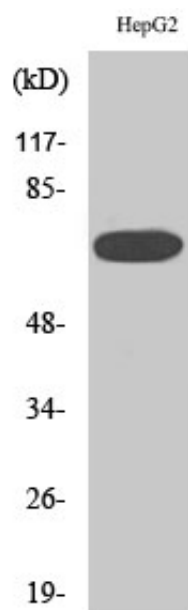
Catalog_no :	AT2708
Applications :	WB,IHC-p,IF,ELISA
Reactivity :	Human,Mouse
Category :	抗原抗体
Size :	100µg/50µg/20µg
Gene_name :	MAP3K3
Protein_name :	Mitogen-activated protein kinase kinase kinase 3
Humangene_id :	4215
Humanswissprot_no :	Q99759
Mousegene_id :	26406
Mouseswissprot_no :	Q61084
Immunogen :	The antiserum was produced against synthesized peptide derived from human MAP3K3. AA range:101-150
Specificity :	MEK Kinase-3 Polyclonal Antibody detects endogenous levels of MEK Kinase-3 protein.
Formulation :	Liquid in PBS containing 50% glycerol, 0.5% BSA and 0.02% sodium azide.
Source :	Rabbit
Dilution :	Western Blot: 1/500 - 1/2000. Immunohistochemistry: 1/100 - 1/300. Immunofluorescence: 1/200 - 1/1000. ELISA: 1/20000. Not yet tested in other applications.
Purification :	The antibody was affinity-purified from rabbit antiserum by affinity-chromatography using epitope-specific immunogen.
Concentration :	1 mg/ml
Storage_stability :	-20°C/1 year
Msds :	MSDS_Antibody.pdf
Other_name :	MAP3K3; MAPKKK3; MEKK3; Mitogen-activated protein kinase kinase kinase 3; MAPK/ERK kinase kinase 3; MEK kinase 3; MEKK 3



Molecular
Weight :

71KD

Product Images



Western Blot analysis of various cells using MEK Kinase-3 Polyclonal Antibody diluted at 1 : 2000