

## MEK-2 Polyclonal Antibody

Catalog_no :	AT2716
Applications :	WB,IHC-p,IP,ELISA
Reactivity :	Human,Mouse,Rat
Category :	抗原抗体
Size :	100µg/50µg/20µg
Gene_name :	MAP2K2
Protein_name :	Dual specificity mitogen-activated protein kinase kinase 2
Humangene_id :	<a href="#">5605</a>
Humanswissprot_no :	<a href="#">P36507</a>
Mousegene_id :	<a href="#">26396</a>
Mouseswissprot_no :	<a href="#">Q63932</a>
Ratgene_id :	<a href="#">58960</a>
Ratswissprot_no :	<a href="#">P36506</a>
Immunogen :	The antiserum was produced against synthesized peptide derived from human MAP2K2. AA range:261-310
Specificity :	MEK-2 Polyclonal Antibody detects endogenous levels of MEK-2 protein.
Formulation :	Liquid in PBS containing 50% glycerol, 0.5% BSA and 0.02% sodium azide.
Source :	Rabbit
Dilution :	Western Blot: 1/500 - 1/2000. Immunohistochemistry: 1/100 - 1/300. Immunoprecipitation: 2-5 ug/mg lysate. ELISA: 1/10000. Not yet tested in other applications.
Purification :	The antibody was affinity-purified from rabbit antiserum by affinity-chromatography using epitope-specific immunogen.
Concentration :	1 mg/ml
Storage_stability :	-20°C/1 year



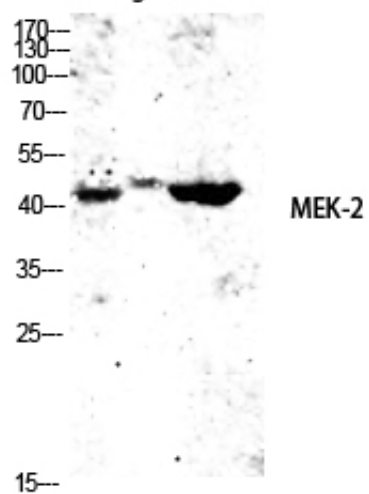
---

MsdS :	<a href="#">MSDS_Antibody.pdf</a>
Other_name :	<a href="#">MAP2K2; MEK2; MKK2; PRKMK2; Dual specificity mitogen-activated protein kinase kinase 2; MAP kinase kinase 2; MAPKK 2; ERK activator kinase 2; MAPK/ERK kinase 2; MEK 2</a>
Molecular Weight :	<a href="#">44KD</a>

---

## Product Images

mouse-lung KB 293T



Western blot analysis of mouse-lung KB 293T lysis using MEK-2 antibody. Antibody was diluted at 1:2000