



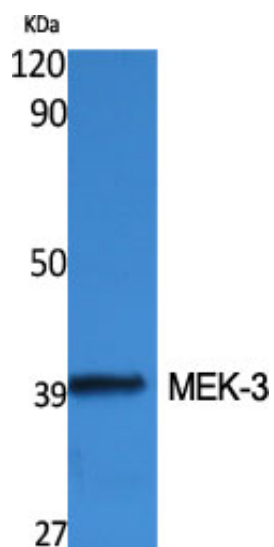
MEK-3 Polyclonal Antibody

Catalog_no :	AT2717
Applications :	WB,ELISA
Reactivity :	Human,Mouse,Rat
Category :	抗原抗体
Size :	100µg/50µg/20µg
Gene_name :	MAP2K3
Protein_name :	Dual specificity mitogen-activated protein kinase kinase 3
Humangene_id	5606
:	
Humanswissprot	P46734
_no :	
Mousegene_id :	26397
Mouseswissprot	O09110
_no :	
Immunogen :	The antiserum was produced against synthesized peptide derived from human MAP2K3. AA range:188-237
Specificity :	MEK-3 Polyclonal Antibody detects endogenous levels of MEK-3 protein.
Formulation :	Liquid in PBS containing 50% glycerol, 0.5% BSA and 0.02% sodium azide.
Source :	Rabbit
Dilution :	Western Blot: 1/500 - 1/2000. ELISA: 1/5000. Not yet tested in other applications.
Purification :	The antibody was affinity-purified from rabbit antiserum by affinity-chromatography using epitope-specific immunogen.
Concentration :	1 mg/ml
Storage_stability	-20°C/1 year
:	
Msds :	MSDS_Antibody.pdf
Other_name :	MAP2K3; MEK3; MKK3; PRKMK3; SKK2; Dual specificity mitogen-activated protein kinase kinase 3; MAP kinase kinase 3; MAPKK 3; MAPK/ERK kinase 3; MEK 3; Stress-activated protein kinase kinase 2; SAPK kinase 2; SAPKK-2; SAPKK2
Molecular	39KD

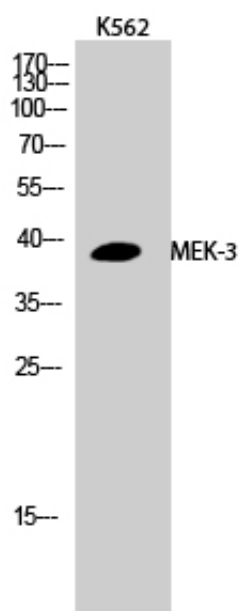


Weight :

Product Images



Western Blot analysis of various cells using MEK-3 Polyclonal Antibody



Western Blot analysis of K562 cells using MEK-3 Polyclonal Antibody