

MEK-6 Polyclonal Antibody

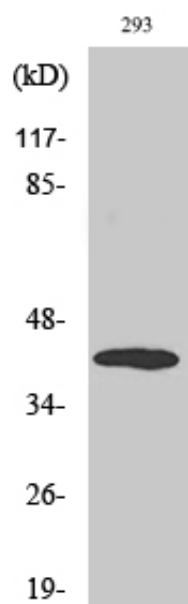
Catalog_no :	AT2722
Applications :	WB,IHC-p,IF,ELISA
Reactivity :	Human,Mouse,Rat
Category :	抗原抗体
Size :	100µg/50µg/20µg
Gene_name :	MAP2K6
Protein_name :	Dual specificity mitogen-activated protein kinase kinase 6
Humangene_id :	5608
Humanswissprot_no :	P52564
Mousegene_id :	26399
Mouseswissprot_no :	P70236
Immunogen :	The antiserum was produced against synthesized peptide derived from human MAP2K6. AA range:1-50
Specificity :	MEK-6 Polyclonal Antibody detects endogenous levels of MEK-6 protein.
Formulation :	Liquid in PBS containing 50% glycerol, 0.5% BSA and 0.02% sodium azide.
Source :	Rabbit
Dilution :	Western Blot: 1/500 - 1/2000. Immunohistochemistry: 1/100 - 1/300. Immunofluorescence: 1/200 - 1/1000. ELISA: 1/10000. Not yet tested in other applications.
Purification :	The antibody was affinity-purified from rabbit antiserum by affinity-chromatography using epitope-specific immunogen.
Concentration :	1 mg/ml
Storage_stability :	-20°C/1 year
Msds :	MSDS_Antibody.pdf
Other_name :	MAP2K6; MEK6; MKK6; PRKMK6; SKK3; Dual specificity mitogen-activated protein kinase kinase 6; MAP kinase kinase 6; MAPKK 6; MAPK/ERK kinase 6; MEK 6; Stress-activated protein kinase kinase 3; SAPK kinase 3; SAPKK-3; SAPKK3



Molecular
Weight :

37KD

Product Images



Western Blot analysis of various cells using MEK-6 Polyclonal Antibody