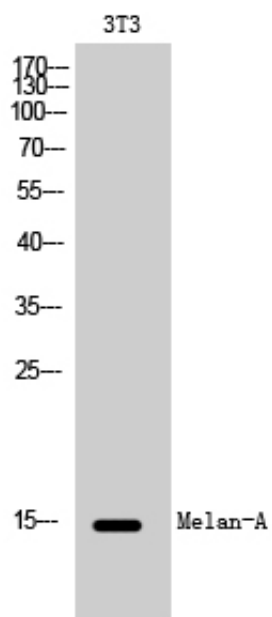


Melan-A Polyclonal Antibody

Catalog_no :	AT2728
Applications :	WB,IHC-p,ELISA
Reactivity :	Human
Category :	抗原抗体
Size :	100µg/50µg/20µg
Gene_name :	MLANA
Protein_name :	Melanoma antigen recognized by T-cells 1
Humangene_id :	2315
Humanswissprot_no :	Q16655
Immunogen :	The antiserum was produced against synthesized peptide derived from human MART-1. AA range:41-90
Specificity :	Melan-A Polyclonal Antibody detects endogenous levels of Melan-A protein.
Formulation :	Liquid in PBS containing 50% glycerol, 0.5% BSA and 0.02% sodium azide.
Source :	Rabbit
Dilution :	Western Blot: 1/500 - 1/2000. Immunohistochemistry: 1/100 - 1/300. ELISA: 1/40000. Not yet tested in other applications.
Purification :	The antibody was affinity-purified from rabbit antiserum by affinity-chromatography using epitope-specific immunogen.
Concentration :	1 mg/ml
Storage_stability :	-20°C/1 year
Msds :	MSDS_Antibody.pdf
Other_name :	MLANA; MART1; Melanoma antigen recognized by T-cells 1; MART-1; Antigen LB39-AA; Antigen SK29-AA; Protein Melan-A
Molecular Weight :	15KD

Product Images



Western Blot analysis of 3T3 cells using Melan-A Polyclonal Antibody