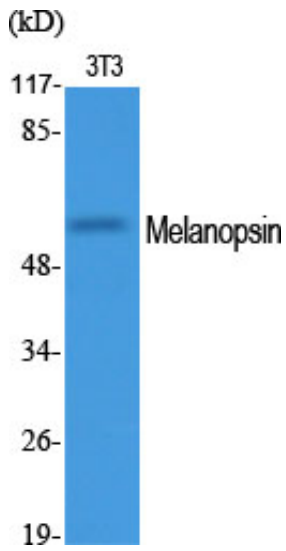




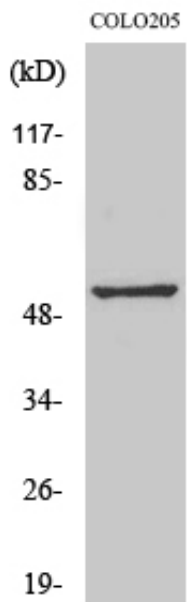
## Melanopsin Polyclonal Antibody

Catalog_no :	AT2729
Applications :	WB,IF,ELISA
Reactivity :	Human
Category :	抗原抗体
Size :	100µg/50µg/20µg
Gene_name :	OPN4
Protein_name :	Melanopsin
Humangene_id :	<a href="#">94233</a>
Humanswissprot_no :	<a href="#">Q9UHM6</a>
Immunogen :	The antiserum was produced against synthesized peptide derived from human OPN4. AA range:429-478
Specificity :	Melanopsin Polyclonal Antibody detects endogenous levels of Melanopsin protein.
Formulation :	Liquid in PBS containing 50% glycerol, 0.5% BSA and 0.02% sodium azide.
Source :	Rabbit
Dilution :	Western Blot: 1/500 - 1/2000. Immunofluorescence: 1/200 - 1/1000. ELISA: 1/5000. Not yet tested in other applications.
Purification :	The antibody was affinity-purified from rabbit antiserum by affinity-chromatography using epitope-specific immunogen.
Concentration :	1 mg/ml
Storage_stability :	-20°C/1 year
Msds :	MSDS_Antibody.pdf
Other_name :	OPN4; MOP; Melanopsin; Opsin-4
Molecular Weight :	55KD

## Product Images

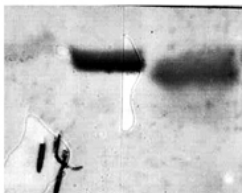


Western Blot analysis of various cells using Melanopsin Polyclonal Antibody



Western Blot analysis of COLO205 cells using Melanopsin Polyclonal Antibody

colo 3T3



Melanopsin  
~55KD

Western blot analysis of various lysis using Melanopsin Polyclonal Antibody. Secondary antibody was diluted at 1:20000