

MerTK/Tyro3 Polyclonal Antibody

| | |
|---------------------|---|
| Catalog_no : | AT2734 |
| Applications : | WB,IHC-p,ELISA |
| Reactivity : | Human,Mouse,Rat |
| Category : | 抗原抗体 |
| Size : | 100µg/50µg/20µg |
| Gene_name : | MERTK/TYRO3 |
| Protein_name : | Tyrosine-protein kinase Mer/Tyrosine-protein kinase receptor TYRO3 |
| Humangene_id : | 10461/7301 |
| Humanswissprot_no : | Q12866/Q06418 |
| Mousegene_id : | 17289/22174 |
| Ratgene_id : | 65037/25232 |
| Ratswissprot_no : | P57097/P55146 |
| Immunogen : | The antiserum was produced against synthesized peptide derived from human MER/SKY. AA range:716-765 |
| Specificity : | MerTK/Tyro3 Polyclonal Antibody detects endogenous levels of MerTK/Tyro3 protein. |
| Formulation : | Liquid in PBS containing 50% glycerol, 0.5% BSA and 0.02% sodium azide. |
| Source : | Rabbit |
| Dilution : | Western Blot: 1/500 - 1/2000. Immunohistochemistry: 1/100 - 1/300. ELISA: 1/20000. Not yet tested in other applications. |
| Purification : | The antibody was affinity-purified from rabbit antiserum by affinity-chromatography using epitope-specific immunogen. |
| Concentration : | 1 mg/ml |
| Storage_stability : | -20°C/1 year |
| Msds : | MSDS_Antibody.pdf |
| Other_name : | MERTK; MER; Tyrosine-protein kinase Mer; Proto-oncogene c-Mer; Receptor tyrosine kinase MerTK; TYRO3; BYK; DTK; RSE; SKY; Tyrosine-protein kinase receptor TYRO3; |

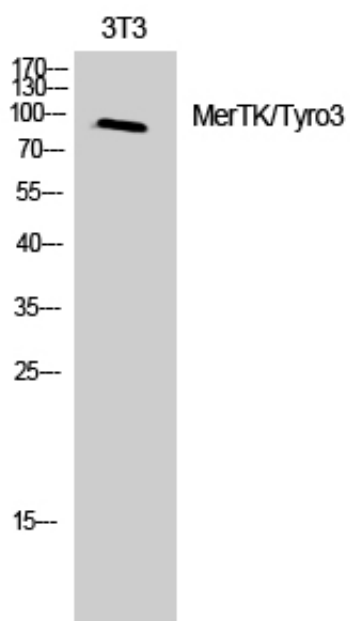


Tyrosine-protein kinase DTK; Tyrosine-protein kinase RSE; Tyrosine-protein kin

Molecular
Weight :

97KD

Product Images



Western Blot analysis of 3T3 cells using MerTK/Tyro3 Polyclonal Antibody