

mGluR5 Polyclonal Antibody

Catalog_no :	AT2745
Applications :	WB,IHC-p,IF,ELISA
Reactivity :	Human,Mouse,Rat
Category :	抗原抗体
Size :	100µg/50µg/20µg
Gene_name :	GRM5
Protein_name :	Metabotropic glutamate receptor 5
Humangene_id :	2915
Humanswissprot_no :	P41594
Mousegene_id :	108071
Mouseswissprot_no :	Q3UVX5
Ratgene_id :	24418
Ratswissprot_no :	P31424
Immunogen :	The antiserum was produced against synthesized peptide derived from human GRM5. AA range:21-70
Specificity :	mGluR5 Polyclonal Antibody detects endogenous levels of mGluR5 protein.
Formulation :	Liquid in PBS containing 50% glycerol, 0.5% BSA and 0.02% sodium azide.
Source :	Rabbit
Dilution :	Western Blot: 1/500 - 1/2000. Immunohistochemistry: 1/100 - 1/300. Immunofluorescence: 1/200 - 1/1000. ELISA: 1/10000. Not yet tested in other applications.
Purification :	The antibody was affinity-purified from rabbit antiserum by affinity-chromatography using epitope-specific immunogen.
Concentration :	1 mg/ml
Storage_stability :	-20°C/1 year

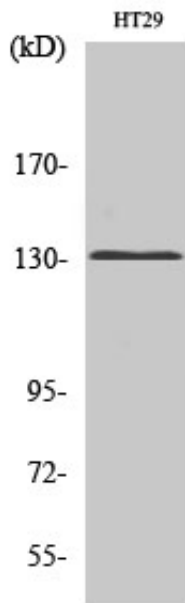


Msd : MSDS_Antibody.pdf

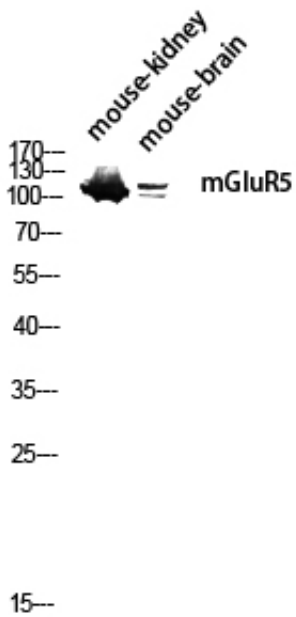
Other_name : GRM5; GPRC1E; MGLUR5; Metabotropic glutamate receptor 5; mGluR5

Molecular Weight : 130KD

Product Images



Western Blot analysis of various cells using mGluR5 Polyclonal Antibody diluted at 1 : 1000



Western blot analysis of mouse-kidney mouse-brain lysis using mGluR5 antibody. Antibody was diluted at 1:1000