

mGluR-7 Polyclonal Antibody

Catalog_no :	<u>AT2747</u>
Applications :	<u>WB,IHC-p,IF,ELISA</u>
Reactivity :	<u>Human,Mouse,Rat</u>
Category :	<u>抗原抗体</u>
Size :	<u>100µg/50µg/20µg</u>
Gene_name :	<u>GRM7</u>
Protein_name :	<u>Metabotropic glutamate receptor 7</u>
Humangene_id :	<u>2917</u>
Humanswissprot_no :	<u>Q14831</u>
Mousegene_id :	<u>108073</u>
Mouseswissprot_no :	<u>Q68ED2</u>
Ratgene_id :	<u>81672</u>
Ratswissprot_no :	<u>P35400</u>
Immunogen :	<u>The antiserum was produced against synthesized peptide derived from human mGluR7. AA range:866-915</u>
Specificity :	<u>mGluR-7 Polyclonal Antibody detects endogenous levels of mGluR-7 protein.</u>
Formulation :	<u>Liquid in PBS containing 50% glycerol, 0.5% BSA and 0.02% sodium azide.</u>
Source :	<u>Rabbit</u>
Dilution :	<u>Western Blot: 1/500 - 1/2000. Immunohistochemistry: 1/100 - 1/300. Immunofluorescence: 1/200 - 1/1000. ELISA: 1/20000. Not yet tested in other applications.</u>
Purification :	<u>The antibody was affinity-purified from rabbit antiserum by affinity-chromatography using epitope-specific immunogen.</u>
Concentration :	<u>1 mg/ml</u>
Storage_stability :	<u>-20°C/1 year</u>

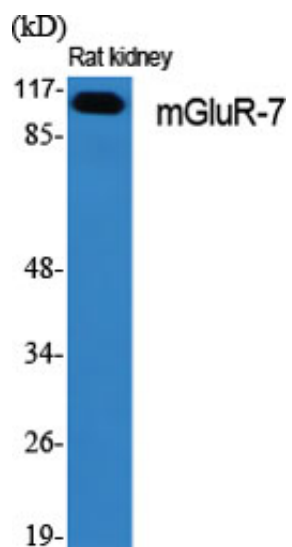


Msd : MSDS_Antibody.pdf

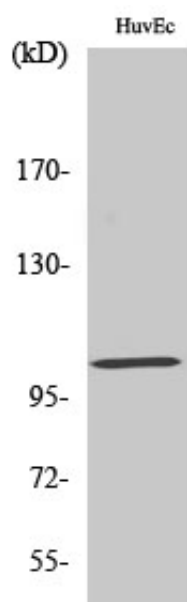
Other_name : GRM7; GPRC1G; MGLUR7; Metabotropic glutamate receptor 7; mGluR7

Molecular Weight : 100KD

Product Images



Western Blot analysis of various cells using mGluR-7 Polyclonal Antibody



Western Blot analysis of HuvEc cells using mGluR-7 Polyclonal Antibody