

## MGMT Polyclonal Antibody

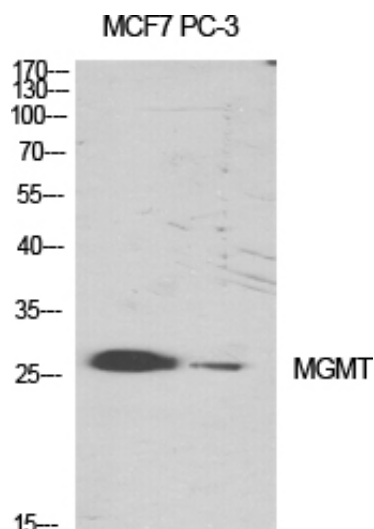
Catalog_no :	<u>AT2750</u>
Applications :	<u>WB,IHC-p,ELISA</u>
Reactivity :	<u>Human,Rat</u>
Category :	<u>抗原抗体</u>
Size :	<u>100µg/50µg/20µg</u>
Gene_name :	<u>MGMT</u>
Protein_name :	<u>Methylated-DNA--protein-cysteine methyltransferase</u>
Humangene_id :	<u><a href="#">4255</a></u>
Humanswissprot_no :	<u><a href="#">P16455</a></u>
Ratgene_id :	<u><a href="#">25332</a></u>
Ratswissprot_no :	<u><a href="#">P24528</a></u>
Immunogen :	<u>The antiserum was produced against synthesized peptide derived from human MGMT. AA range:1-50</u>
Specificity :	<u>MGMT Polyclonal Antibody detects endogenous levels of MGMT protein.</u>
Formulation :	<u>Liquid in PBS containing 50% glycerol, 0.5% BSA and 0.02% sodium azide.</u>
Source :	<u>Rabbit</u>
Dilution :	<u>Western Blot: 1/500 - 1/2000. Immunohistochemistry: 1/100 - 1/300. ELISA: 1/5000. Not yet tested in other applications.</u>
Purification :	<u>The antibody was affinity-purified from rabbit antiserum by affinity-chromatography using epitope-specific immunogen.</u>
Concentration :	<u>1 mg/ml</u>
Storage_stability :	<u>-20°C/1 year</u>
Msds :	<u>MSDS_Antibody.pdf</u>
Other_name :	<u>MGMT; Methylated-DNA--protein-cysteine methyltransferase; 6-O-methylguanine-DNA methyltransferase; MGMT; O-6-methylguanine-DNA-alkyltransferase</u>
Molecular	<u>22KD</u>



Weight :

---

## Product Images



Western Blot analysis of various cells using MGMT Polyclonal Antibody diluted at 1 : 1000 cells nucleus extracted by Minute TM Cytoplasmic and Nuclear Fractionation kit (SC-003, Inventbiotech, MN, USA).



Western Blot analysis of Jurkat cells using MGMT Polyclonal Antibody diluted at 1 : 1000 cells nucleus extracted by Minute TM Cytoplasmic and Nuclear Fractionation kit (SC-003, Inventbiotech, MN, USA).