

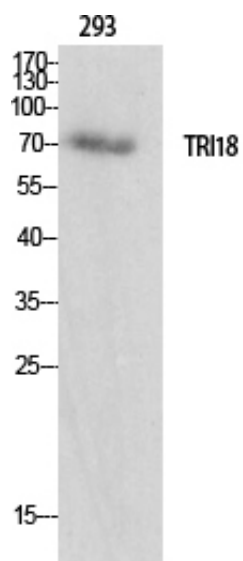
Midline-1 Polyclonal Antibody

Catalog_no :	AT2760
Applications :	WB,IHC-p,IF,ELISA
Reactivity :	Human,Mouse,Rat
Category :	抗原抗体
Size :	100µg/50µg/20µg
Gene_name :	MID1
Protein_name :	Midline-1
Humangene_id :	4281
Humanswissprot_no :	O15344
Mousegene_id :	17318
Mouseswissprot_no :	O70583
Ratgene_id :	54252
Ratswissprot_no :	P82458
Immunogen :	The antiserum was produced against synthesized peptide derived from human TRI18. AA range:71-120
Specificity :	Midline-1 Polyclonal Antibody detects endogenous levels of Midline-1 protein.
Formulation :	Liquid in PBS containing 50% glycerol, 0.5% BSA and 0.02% sodium azide.
Source :	Rabbit
Dilution :	Western Blot: 1/500 - 1/2000. Immunohistochemistry: 1/100 - 1/300. Immunofluorescence: 1/200 - 1/1000. ELISA: 1/40000. Not yet tested in other applications.
Purification :	The antibody was affinity-purified from rabbit antiserum by affinity-chromatography using epitope-specific immunogen.
Concentration :	1 mg/ml
Storage_stability :	-20°C/1 year

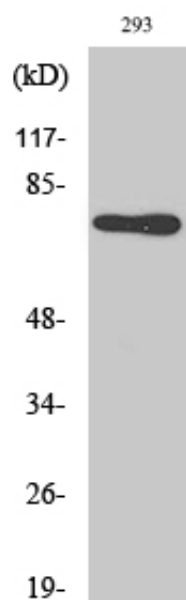


MsdS :	MSDS_Antibody.pdf
Other_name :	MID1; FXY; RNF59; TRIM18; XPRF; Midline-1; Midin; Midline 1 RING finger protein; Putative transcription factor XPRF; RING finger protein 59; Tripartite motif-containing protein 18
Molecular Weight :	75KD

Product Images



Western Blot analysis of various cells using Midline-1 Polyclonal Antibody



Western Blot analysis of 293 cells using Midline-1 Polyclonal Antibody