



Mindin Polyclonal Antibody

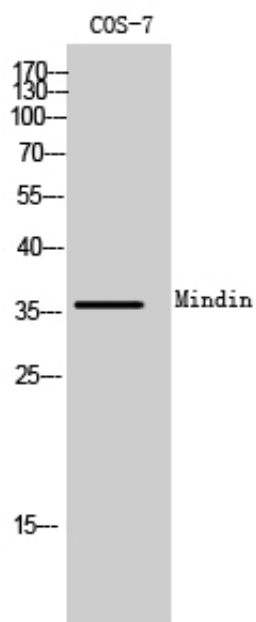
Catalog_no :	<u>AT2763</u>
Applications :	<u>WB,ELISA</u>
Reactivity :	<u>Human,Mouse,Rat,Monkey</u>
Category :	<u>抗原抗体</u>
Size :	<u>100µg/50µg/20µg</u>
Gene_name :	<u>SPON2</u>
Protein_name :	<u>Spondin-2</u>
Humangene_id :	<u>10417</u>
Humanswissprot_no :	<u>Q9BUD6</u>
Mousegene_id :	<u>100689</u>
Mouseswissprot_no :	<u>Q8BMS2</u>
Ratgene_id :	<u>171569</u>
Ratswissprot_no :	<u>Q9WW75</u>
Immunogen :	<u>The antiserum was produced against synthesized peptide derived from human SPON2. AA range:71-120</u>
Specificity :	<u>Mindin Polyclonal Antibody detects endogenous levels of Mindin protein.</u>
Formulation :	<u>Liquid in PBS containing 50% glycerol, 0.5% BSA and 0.02% sodium azide.</u>
Source :	<u>Rabbit</u>
Dilution :	<u>Western Blot: 1/500 - 1/2000. ELISA: 1/40000. Not yet tested in other applications.</u>
Purification :	<u>The antibody was affinity-purified from rabbit antiserum by affinity-chromatography using epitope-specific immunogen.</u>
Concentration :	<u>1 mg/ml</u>
Storage_stability :	<u>-20°C/1 year</u>
Msds :	<u>MSDS_Antibody.pdf</u>



Other_name : SPON2; DIL1; Spondin-2; Differentially expressed in cancerous and non-cancerous lung cells 1; DIL-1; Mindin

Molecular Weight : 37KD

Product Images



Western Blot analysis of COS-7 cells using Mindin Polyclonal Antibody