

## MINK1 Polyclonal Antibody

Catalog_no :	AT2764
Applications :	WB,IHC-p,ELISA
Reactivity :	Human,Mouse
Category :	抗原抗体
Size :	100µg/50µg/20µg
Gene_name :	MINK1
Protein_name :	Misshapen-like kinase 1
Humangene_id :	<a href="#">50488</a>
Humanswissprot_no :	<a href="#">Q8N4C8</a>
Mousegene_id :	<a href="#">50932</a>
Mouseswissprot_no :	<a href="#">Q9J1M52</a>
Immunogen :	The antiserum was produced against synthesized peptide derived from human MAP4K6. AA range:401-450
Specificity :	MINK1 Polyclonal Antibody detects endogenous levels of MINK1 protein.
Formulation :	Liquid in PBS containing 50% glycerol, 0.5% BSA and 0.02% sodium azide.
Source :	Rabbit
Dilution :	Western Blot: 1/500 - 1/2000. Immunohistochemistry: 1/100 - 1/300. ELISA: 1/20000. Not yet tested in other applications.
Purification :	The antibody was affinity-purified from rabbit antiserum by affinity-chromatography using epitope-specific immunogen.
Concentration :	1 mg/ml
Storage_stability :	-20°C/1 year
Msds :	<a href="#">MSDS_Antibody.pdf</a>
Other_name :	MINK1; B55; MAP4K6; MINK; YSK2; ZC3; Misshapen-like kinase 1; GCK family kinase MiNK; MAPK/ERK kinase kinase kinase 6; MEK kinase kinase 6; MEKKK 6; Misshapen/NIK-related kinase; Mitogen-activated protein kinase kinase kinase 6

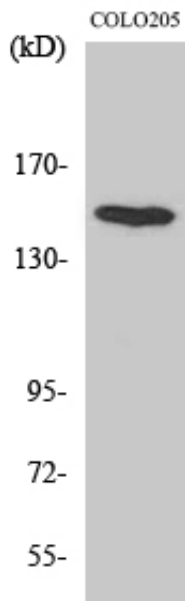


Molecular  
Weight :

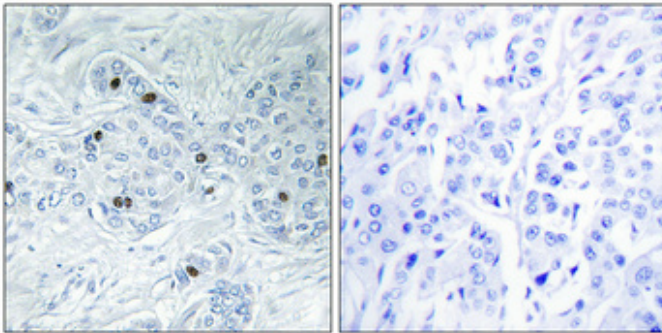
150KD

---

## Product Images



Western Blot analysis of various cells using MINK1 Polyclonal Antibody diluted at 1 : 1000



Immunohistochemical analysis of paraffin-embedded Human breast cancer. Antibody was diluted at 1:100(4°,overnight). High-pressure and temperature Tris-EDTA,pH8.0 was used for antigen retrieval. Negative contrl (right) obtaned from antibody was pre-absorbed by immunogen peptide.