



## MIPP Polyclonal Antibody

Catalog_no :	<u>AT2767</u>
Applications :	<u>WB,IHC-p,ELISA</u>
Reactivity :	<u>Human,Mouse,Rat</u>
Category :	<u>抗原抗体</u>
Size :	<u>100µg/50µg/20µg</u>
Gene_name :	<u>MINPP1</u>
Protein_name :	<u>Multiple inositol polyphosphate phosphatase 1</u>
Humangene_id :	<u><a href="#">9562</a></u>
Humanswissprot_no :	<u><a href="#">Q9UNW1</a></u>
Mousegene_id :	<u><a href="#">17330</a></u>
Mouseswissprot_no :	<u><a href="#">Q9Z2L6</a></u>
Ratgene_id :	<u><a href="#">29688</a></u>
Ratswissprot_no :	<u><a href="#">O35217</a></u>
Immunogen :	<u>The antiserum was produced against synthesized peptide derived from human MINPP1. AA range:328-377</u>
Specificity :	<u>MIPP Polyclonal Antibody detects endogenous levels of MIPP protein.</u>
Formulation :	<u>Liquid in PBS containing 50% glycerol, 0.5% BSA and 0.02% sodium azide.</u>
Source :	<u>Rabbit</u>
Dilution :	<u>Western Blot: 1/500 - 1/2000. Immunohistochemistry: 1/100 - 1/300. ELISA: 1/10000. Not yet tested in other applications.</u>
Purification :	<u>The antibody was affinity-purified from rabbit antiserum by affinity-chromatography using epitope-specific immunogen.</u>
Concentration :	<u>1 mg/ml</u>
Storage_stability :	<u>-20°C/1 year</u>
Msds :	<u>MSDS_Antibody.pdf</u>



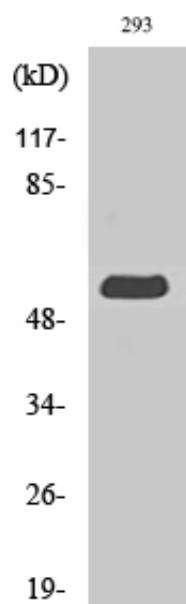
Other\_name : MINPP1; MIPP; Multiple inositol polyphosphate phosphatase 1; 2;  
3-bisphosphoglycerate 3-phosphatase; 2,3-BPG phosphatase; Inositol;  
1,3,4,5-tetrakisphosphate 3-phosphatase; Ins(1,3,4,5)P(4) 3-phosphatase

---

Molecular Weight : 60KD

---

## Product Images



Western Blot analysis of various cells using MIPP Polyclonal Antibody