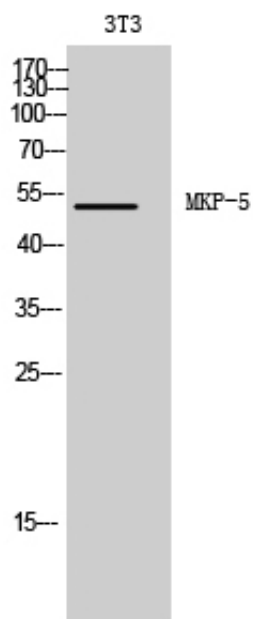




MKP-5 Polyclonal Antibody

| | |
|---------------------|---|
| Catalog_no : | <u>AT2776</u> |
| Applications : | <u>WB,ELISA</u> |
| Reactivity : | <u>Human,Mouse,Rat</u> |
| Category : | <u>抗原抗体</u> |
| Size : | <u>100µg/50µg/20µg</u> |
| Gene_name : | <u>DUSP10</u> |
| Protein_name : | <u>Dual specificity protein phosphatase 10</u> |
| Humangene_id : | <u>11221</u> |
| Humanswissprot_no : | <u>Q9Y6W6</u> |
| Mousegene_id : | <u>63953</u> |
| Mouseswissprot_no : | <u>Q9ESS0</u> |
| Immunogen : | <u>Synthesized peptide derived from MKP-5 . at AA range: 330-410</u> |
| Specificity : | <u>MKP-5 Polyclonal Antibody detects endogenous levels of MKP-5 protein.</u> |
| Formulation : | <u>Liquid in PBS containing 50% glycerol, 0.5% BSA and 0.02% sodium azide.</u> |
| Source : | <u>Rabbit</u> |
| Dilution : | <u>Western Blot: 1/500 - 1/2000. ELISA: 1/40000. Not yet tested in other applications.</u> |
| Purification : | <u>The antibody was affinity-purified from rabbit antiserum by affinity-chromatography using epitope-specific immunogen.</u> |
| Concentration : | <u>1 mg/ml</u> |
| Storage_stability : | <u>-20°C/1 year</u> |
| Msds : | <u>MSDS_Antibody.pdf</u> |
| Other_name : | <u>DUSP10; MKP5; Dual specificity protein phosphatase 10; Mitogen-activated protein kinase phosphatase 5; MAP kinase phosphatase 5; MKP-5</u> |
| Molecular Weight : | <u>52KD</u> |

Product Images



Western Blot analysis of 3T3 cells using MKP-5 Polyclonal Antibody