

MLH1 Polyclonal Antibody

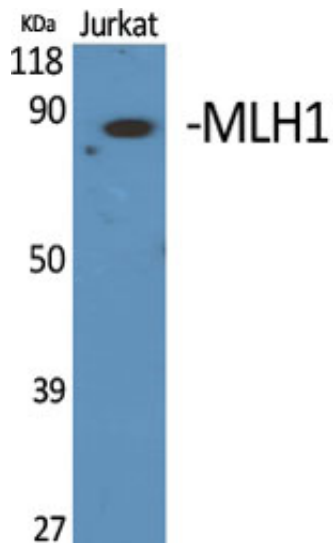
Catalog_no :	AT2780
Applications :	WB,IF,ELISA
Reactivity :	Human,Mouse,Rat
Category :	抗原抗体
Size :	100µg/50µg/20µg
Gene_name :	MLH1
Protein_name :	DNA mismatch repair protein Mlh1
Humangene_id :	4292
Humanswissprot_no :	P40692
Mousegene_id :	17350
Mouseswissprot_no :	Q9JK91
Ratgene_id :	81685
Ratswissprot_no :	P97679
Immunogen :	The antiserum was produced against synthesized peptide derived from human MLH1. AA range:441-490
Specificity :	MLH1 Polyclonal Antibody detects endogenous levels of MLH1 protein.
Formulation :	Liquid in PBS containing 50% glycerol, 0.5% BSA and 0.02% sodium azide.
Source :	Rabbit
Dilution :	Western Blot: 1/500 - 1/2000. Immunofluorescence: 1/200 - 1/1000. ELISA: 1/20000. Not yet tested in other applications.
Purification :	The antibody was affinity-purified from rabbit antiserum by affinity-chromatography using epitope-specific immunogen.
Concentration :	1 mg/ml
Storage_stability :	-20°C/1 year
Msds :	MSDS_Antibody.pdf



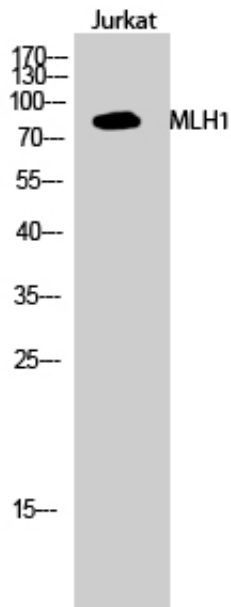
Other_name : MLH1; COCA2; DNA mismatch repair protein Mlh1; MutL protein homolog 1

Molecular Weight : 85KD

Product Images



Western Blot analysis of various cells using MLH1 Polyclonal Antibody cells nucleus extracted by Minute TM Cytoplasmic and Nuclear Fractionation kit (SC-003, Inventbiotech, MN, USA).



Western Blot analysis of Jurkat cells using MLH1 Polyclonal Antibody cells nucleus extracted by Minute TM Cytoplasmic and Nuclear Fractionation kit (SC-003, Inventbiotech, MN, USA).