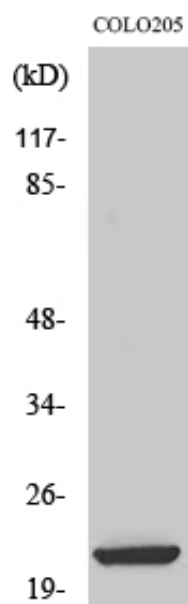


## ML-IAP Polyclonal Antibody

Catalog_no :	AT2782
Applications :	WB,ELISA
Reactivity :	Human
Category :	抗原抗体
Size :	100µg/50µg/20µg
Gene_name :	BIRC7
Protein_name :	Baculoviral IAP repeat-containing protein 7
Humangene_id :	<a href="#">79444</a>
Humanswissprot_no :	<a href="#">Q96CA5</a>
Immunogen :	The antiserum was produced against synthesized peptide derived from human ML-IAP. AA range:162-211
Specificity :	ML-IAP Polyclonal Antibody detects endogenous levels of ML-IAP protein.
Formulation :	Liquid in PBS containing 50% glycerol, 0.5% BSA and 0.02% sodium azide.
Source :	Rabbit
Dilution :	Western Blot: 1/500 - 1/2000. ELISA: 1/10000. Not yet tested in other applications.
Purification :	The antibody was affinity-purified from rabbit antiserum by affinity-chromatography using epitope-specific immunogen.
Concentration :	1 mg/ml
Storage_stability :	-20°C/1 year
Msds :	MSDS_Antibody.pdf
Other_name :	BIRC7; KIAP; LIVIN; MLIAP; RNF50; Baculoviral IAP repeat-containing protein 7; Kidney inhibitor of apoptosis protein; KIAP; Livin; Melanoma inhibitor of apoptosis protein; ML-IAP; RING finger protein 50
Molecular Weight :	21KD

## Product Images



Western Blot analysis of various cells using ML-IAP Polyclonal Antibody