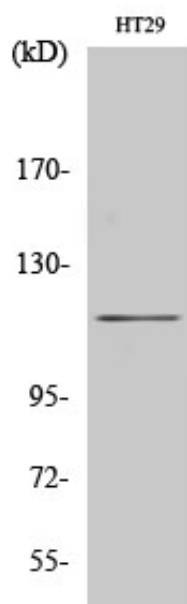


## MLK4 Polyclonal Antibody

Catalog_no :	AT2787
Applications :	WB,ELISA
Reactivity :	Human
Category :	抗原抗体
Size :	100µg/50µg/20µg
Gene_name :	MLK4
Protein_name :	Mitogen-activated protein kinase kinase kinase MLK4
Humangene_id :	<a href="#">84451</a>
Humanswissprot_no :	<a href="#">Q5TCX8</a>
Immunogen :	The antiserum was produced against synthesized peptide derived from human MAP3KL4. AA range:631-680
Specificity :	MLK4 Polyclonal Antibody detects endogenous levels of MLK4 protein.
Formulation :	Liquid in PBS containing 50% glycerol, 0.5% BSA and 0.02% sodium azide.
Source :	Rabbit
Dilution :	Western Blot: 1/500 - 1/2000. ELISA: 1/20000. Not yet tested in other applications.
Purification :	The antibody was affinity-purified from rabbit antiserum by affinity-chromatography using epitope-specific immunogen.
Concentration :	1 mg/ml
Storage_stability :	-20°C/1 year
Msds :	MSDS_Antibody.pdf
Other_name :	MLK4; KIAA1804; Mitogen-activated protein kinase kinase kinase MLK4; Mixed lineage kinase 4
Molecular Weight :	110KD

## Product Images



Western Blot analysis of various cells using MLK4 Polyclonal Antibody