

## MLTK Polyclonal Antibody

Catalog_no :	AT2790
Applications :	WB,IF,ELISA
Reactivity :	Human,Mouse
Category :	抗原抗体
Size :	100µg/50µg/20µg
Gene_name :	MLTK
Protein_name :	Mitogen-activated protein kinase kinase kinase MLT
Humangene_id :	<a href="#">51776</a>
Humanswissprot_no :	<a href="#">Q9NYL2</a>
Mousegene_id :	<a href="#">65964</a>
Mouseswissprot_no :	<a href="#">Q9ESL4</a>
Immunogen :	The antiserum was produced against synthesized peptide derived from human MLTK. AA range:701-750
Specificity :	MLTK Polyclonal Antibody detects endogenous levels of MLTK protein.
Formulation :	Liquid in PBS containing 50% glycerol, 0.5% BSA and 0.02% sodium azide.
Source :	Rabbit
Dilution :	Western Blot: 1/500 - 1/2000. Immunofluorescence: 1/200 - 1/1000. ELISA: 1/20000. Not yet tested in other applications.
Purification :	The antibody was affinity-purified from rabbit antiserum by affinity-chromatography using epitope-specific immunogen.
Concentration :	1 mg/ml
Storage_stability :	-20°C/1 year
Msds :	MSDS_Antibody.pdf
Other_name :	MLTK; ZAK; HCCS4; Mitogen-activated protein kinase kinase kinase MLT; Human cervical cancer suppressor gene 4 protein; HCCS-4; Leucine zipper- and sterile alpha motif-containing kinase; MLK-like mitogen-activated protein triple kinase; Mixe

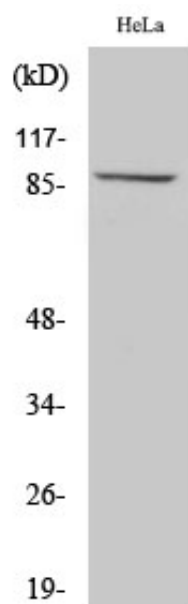


Molecular  
Weight :

91KD

---

## Product Images



Western Blot analysis of various cells using MLTK Polyclonal Antibody diluted at 1 : 1000