

## Mlx Polyclonal Antibody

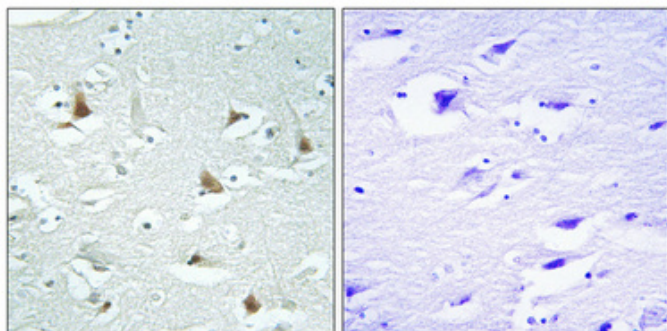
Catalog_no :	AT2791
Applications :	WB,IHC-p,ELISA
Reactivity :	Human,Mouse,Rat
Category :	抗原抗体
Size :	100µg/50µg/20µg
Gene_name :	MLX
Protein_name :	Max-like protein X
Humangene_id :	<a href="#">6945</a>
Humanswissprot_no :	<a href="#">Q9UH92</a>
Mousegene_id :	<a href="#">21428</a>
Mouseswissprot_no :	<a href="#">O08609</a>
Immunogen :	The antiserum was produced against synthesized peptide derived from human Mlx. AA range:111-160
Specificity :	Mlx Polyclonal Antibody detects endogenous levels of Mlx protein.
Formulation :	Liquid in PBS containing 50% glycerol, 0.5% BSA and 0.02% sodium azide.
Source :	Rabbit
Dilution :	Western Blot: 1/500 - 1/2000. Immunohistochemistry: 1/100 - 1/300. ELISA: 1/10000. Not yet tested in other applications.
Purification :	The antibody was affinity-purified from rabbit antiserum by affinity-chromatography using epitope-specific immunogen.
Concentration :	1 mg/ml
Storage_stability :	-20°C/1 year
Msds :	<a href="#">MSDS_Antibody.pdf</a>
Other_name :	MLX; BHLHD13; TCFL4; Max-like protein X; Class D basic helix-loop-helix protein 13; bHLHd13; Max-like bHLHZip protein; Protein BigMax; Transcription factor-like protein 4
Molecular	33KD



Weight :

---

## Product Images



Immunohistochemical analysis of paraffin-embedded Human brain. Antibody was diluted at 1:100(4°,overnight). High-pressure and temperature Tris-EDTA,pH8.0 was used for antigen retrieval. Negative contrl (right) obtaned from antibody was pre-absorbed by immunogen peptide.