



MMP-11 Polyclonal Antibody

Catalog_no :	AT2794
Applications :	WB,IHC-p,IF,ELISA
Reactivity :	Human,Mouse,Rat
Category :	抗原抗体
Size :	100µg/50µg/20µg
Gene_name :	MMP11
Protein_name :	Stromelysin-3
Humangene_id :	4320
Humanswissprot_no :	P24347
Mousegene_id :	17385
Mouseswissprot_no :	Q02853
Ratgene_id :	25481
Ratswissprot_no :	Q49955
Immunogen :	The antiserum was produced against synthesized peptide derived from human MMP-11. AA range:61-110
Specificity :	MMP-11 Polyclonal Antibody detects endogenous levels of MMP-11 protein.
Formulation :	Liquid in PBS containing 50% glycerol, 0.5% BSA and 0.02% sodium azide.
Source :	Rabbit
Dilution :	Western Blot: 1/500 - 1/2000. Immunohistochemistry: 1/100 - 1/300. Immunofluorescence: 1/200 - 1/1000. ELISA: 1/20000. Not yet tested in other applications.
Purification :	The antibody was affinity-purified from rabbit antiserum by affinity-chromatography using epitope-specific immunogen.
Concentration :	1 mg/ml
Storage_stability :	-20°C/1 year

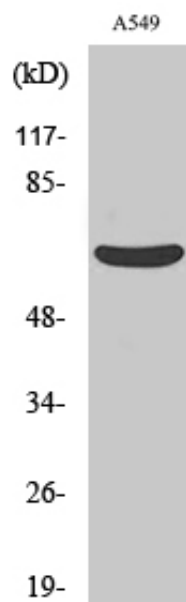


Msd : MSDS_Antibody.pdf

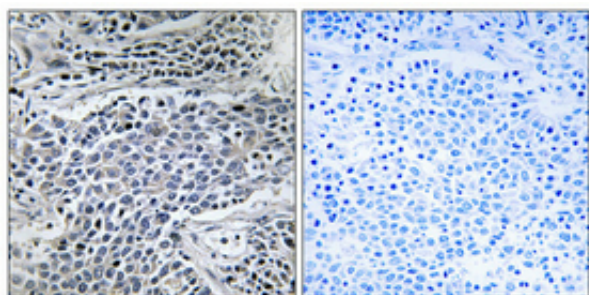
Other_name : MMP11; STMY3; Stromelysin-3; SL-3; ST3; Matrix metalloproteinase-11; MMP-11

Molecular Weight : 60KD

Product Images



Western Blot analysis of various cells using MMP-11 Polyclonal Antibody diluted at 1 : 500



Immunohistochemical analysis of paraffin-embedded Human lung cancer. Antibody was diluted at 1:100(4°, overnight). High-pressure and temperature Tris-EDTA, pH8.0 was used for antigen retrieval. Negative control (right) obtained from antibody was pre-absorbed by immunogen peptide.