

## MMP-8 Polyclonal Antibody

Catalog_no :	AT2800
Applications :	WB,IHC-p,ELISA
Reactivity :	Human,Mouse,Rat
Category :	抗原抗体
Size :	100µg/50µg/20µg
Gene_name :	MMP8
Protein_name :	Neutrophil collagenase
Humangene_id	<a href="#">4317</a>
:	
Humanswissprot	<a href="#">P22894</a>
_no :	
Mousegene_id :	<a href="#">17394</a>
Mouseswissprot	<a href="#">O70138</a>
_no :	
Ratgene_id :	<a href="#">63849</a>
Ratswissprot_no	<a href="#">O88766</a>
:	
Immunogen :	The antiserum was produced against synthesized peptide derived from human MMP-8. AA range:418-467
Specificity :	MMP-8 Polyclonal Antibody detects endogenous levels of MMP-8 protein.
Formulation :	Liquid in PBS containing 50% glycerol, 0.5% BSA and 0.02% sodium azide.
Source :	Rabbit
Dilution :	Western Blot: 1/500 - 1/2000. Immunohistochemistry: 1/100 - 1/300. ELISA: 1/20000. Not yet tested in other applications.
Purification :	The antibody was affinity-purified from rabbit antiserum by affinity-chromatography using epitope-specific immunogen.
Concentration :	1 mg/ml
Storage_stability	-20°C/1 year
:	
Msds :	MSDS_Antibody.pdf



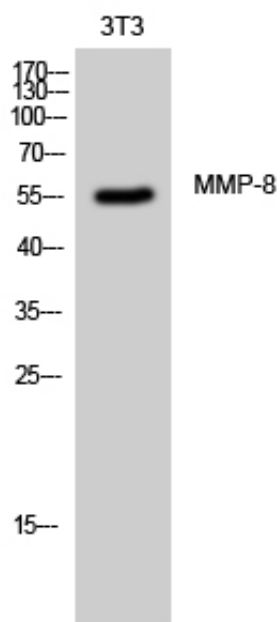
Other\_name : MMP8; CLG1; Neutrophil collagenase; Matrix metalloproteinase-8; MMP-8; PMNL collagenase; PMNL-CL

---

Molecular Weight : 55KD

---

## Product Images



Western Blot analysis of 3T3 cells using MMP-8 Polyclonal Antibody