

## Mnk2 Polyclonal Antibody

Catalog_no :	AT2808
Applications :	WB,ELISA
Reactivity :	Human,Mouse,Rat
Category :	抗原抗体
Size :	100µg/50µg/20µg
Gene_name :	MKNK2
Protein_name :	MAP kinase-interacting serine/threonine-protein kinase 2
Humangene_id :	<a href="#">2872</a>
Humanswissprot_no :	<a href="#">Q9HBH9</a>
Mousegene_id :	<a href="#">17347</a>
Mouseswissprot_no :	<a href="#">Q8CDB0</a>
Ratgene_id :	<a href="#">299618</a>
Ratswissprot_no :	<a href="#">Q5U2N4</a>
Immunogen :	Synthesized peptide derived from the Internal region of human Mnk2.
Specificity :	Mnk2 Polyclonal Antibody detects endogenous levels of Mnk2 protein.
Formulation :	Liquid in PBS containing 50% glycerol, 0.5% BSA and 0.02% sodium azide.
Source :	Rabbit
Dilution :	Western Blot: 1/500 - 1/2000. ELISA: 1/40000. Not yet tested in other applications.
Purification :	The antibody was affinity-purified from rabbit antiserum by affinity-chromatography using epitope-specific immunogen.
Concentration :	1 mg/ml
Storage_stability :	-20°C/1 year
Msds :	<a href="#">MSDS_Antibody.pdf</a>
Other_name :	MKNK2; GPRK7; MNK2; MAP kinase-interacting serine/threonine-protein kinase 2; MAP



kinase signal-integrating kinase 2; MAPK signal-integrating kinase 2; Mnk2

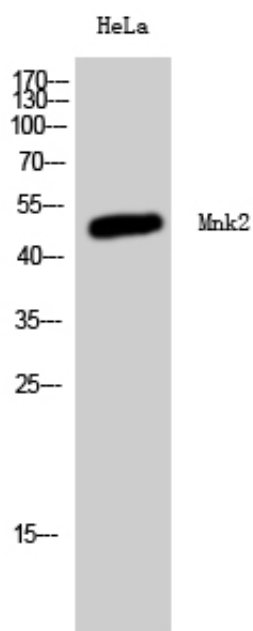
---

Molecular  
Weight :

51KD

---

## Product Images



Western Blot analysis of HeLa cells using Mnk2 Polyclonal Antibody