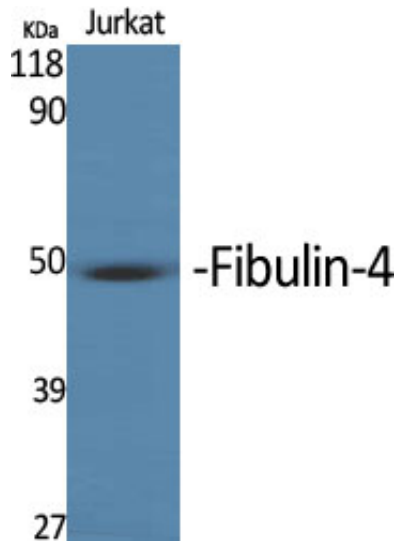




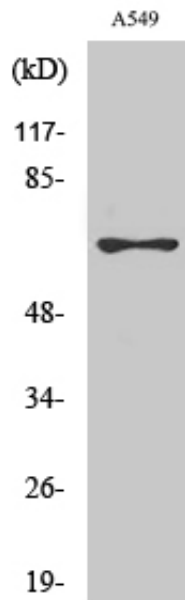
MNT Polyclonal Antibody

Catalog_no :	AT2809
Applications :	WB,ELISA
Reactivity :	Human
Category :	抗原抗体
Size :	100µg/50µg/20µg
Gene_name :	MNT
Protein_name :	Max-binding protein MNT
Humangene_id :	4335
Humanswissprot_no :	Q99583
Immunogen :	The antiserum was produced against synthesized peptide derived from human MNT. AA range:315-364
Specificity :	MNT Polyclonal Antibody detects endogenous levels of MNT protein.
Formulation :	Liquid in PBS containing 50% glycerol, 0.5% BSA and 0.02% sodium azide.
Source :	Rabbit
Dilution :	Western Blot: 1/500 - 1/2000. ELISA: 1/40000. Not yet tested in other applications.
Purification :	The antibody was affinity-purified from rabbit antiserum by affinity-chromatography using epitope-specific immunogen.
Concentration :	1 mg/ml
Storage_stability :	-20°C/1 year
Msds :	MSDS_Antibody.pdf
Other_name :	MNT; BHLHD3; ROX; Max-binding protein MNT; Class D basic helix-loop-helix protein 3; bHLHd3; Myc antagonist MNT; Protein ROX
Molecular Weight :	62KD

Product Images



Western Blot analysis of various cells using MNT Polyclonal Antibody cells nucleus extracted by Minute TM Cytoplasmic and Nuclear Fractionation kit (SC-003, Inventbiotech, MN, USA).



Western Blot analysis of A549 cells using MNT Polyclonal Antibody cells nucleus extracted by Minute TM Cytoplasmic and Nuclear Fractionation kit (SC-003, Inventbiotech, MN, USA).