

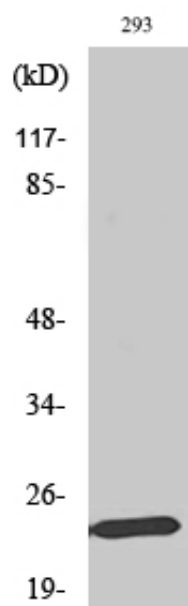
Mob1A Polyclonal Antibody

Catalog_no :	AT2810
Applications :	WB,IHC-p,ELISA
Reactivity :	Human,Mouse,Monkey
Category :	抗原抗体
Size :	100µg/50µg/20µg
Gene_name :	MOB1B
Protein_name :	MOB kinase activator 1B
Humangene_id :	92597
Humanswissprot_no :	Q7L9L4
Mousegene_id :	68473
Mouseswissprot_no :	Q8BPB0
Immunogen :	The antiserum was produced against synthesized peptide derived from human MOL1A. AA range:101-150
Specificity :	Mob1A Polyclonal Antibody detects endogenous levels of Mob1A protein.
Formulation :	Liquid in PBS containing 50% glycerol, 0.5% BSA and 0.02% sodium azide.
Source :	Rabbit
Dilution :	Western Blot: 1/500 - 1/2000. Immunohistochemistry: 1/100 - 1/300. ELISA: 1/40000. Not yet tested in other applications.
Purification :	The antibody was affinity-purified from rabbit antiserum by affinity-chromatography using epitope-specific immunogen.
Concentration :	1 mg/ml
Storage_stability :	-20°C/1 year
Msds :	MSDS_Antibody.pdf
Other_name :	MOB1B; MOB4A; MOBKL1A; MOB kinase activator 1B; Mob1 homolog 1A; Mob1A; Mob1B; Mps one binder kinase activator-like 1A
Molecular	25KD



Weight :

Product Images



Western Blot analysis of various cells using Mob1A Polyclonal Antibody