

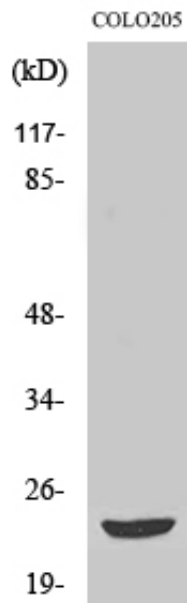
Mob3B Polyclonal Antibody

Catalog_no :	AT2811
Applications :	WB,IHC-p,ELISA
Reactivity :	Human,Mouse
Category :	抗原抗体
Size :	100µg/50µg/20µg
Gene_name :	MOB3B
Protein_name :	MOB kinase activator 3B
Humangene_id :	79817
Humanswissprot_no :	Q86TA1
Mousegene_id :	214944
Mouseswissprot_no :	Q8VE04
Immunogen :	The antiserum was produced against synthesized peptide derived from human MOBKL2B. AA range:71-120
Specificity :	Mob3B Polyclonal Antibody detects endogenous levels of Mob3B protein.
Formulation :	Liquid in PBS containing 50% glycerol, 0.5% BSA and 0.02% sodium azide.
Source :	Rabbit
Dilution :	Western Blot: 1/500 - 1/2000. Immunohistochemistry: 1/100 - 1/300. ELISA: 1/5000. Not yet tested in other applications.
Purification :	The antibody was affinity-purified from rabbit antiserum by affinity-chromatography using epitope-specific immunogen.
Concentration :	1 mg/ml
Storage_stability :	-20°C/1 year
Msds :	MSDS_Antibody.pdf
Other_name :	MOB3B; MOBKL2B; MOB kinase activator 3B; Mob1 homolog 2b; Mps one binder kinase activator-like 2B
Molecular	23KD

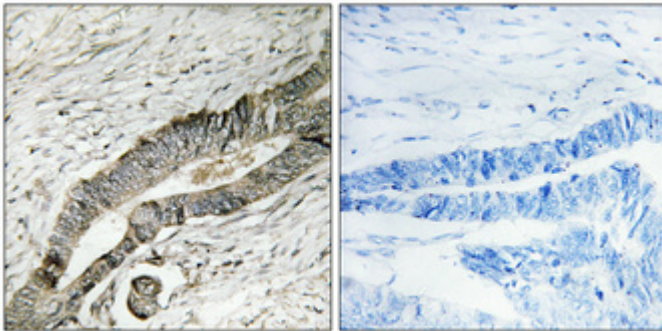


Weight :

Product Images



Western Blot analysis of various cells using Mob3B Polyclonal Antibody



Immunohistochemical analysis of paraffin-embedded Human colon cancer. Antibody was diluted at 1:100(4°,overnight). High-pressure and temperature Tris-EDTA,pH8.0 was used for antigen retrieval. Negative contrl (right) obtaned from antibody was pre-absorbed by immunogen peptide.