



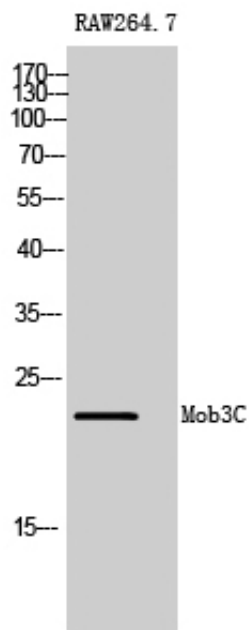
Mob3C Polyclonal Antibody

Catalog_no :	AT2812
Applications :	WB,IHC-p,ELISA
Reactivity :	Human,Mouse
Category :	抗原抗体
Size :	100µg/50µg/20µg
Gene_name :	MOB3C
Protein_name :	MOB kinase activator 3C
Humangene_id :	148932
Humanswissprot_no :	Q70IA8
Mousegene_id :	100465
Mouseswissprot_no :	Q8BJG4
Immunogen :	The antiserum was produced against synthesized peptide derived from human MOL2C. AA range:81-130
Specificity :	Mob3C Polyclonal Antibody detects endogenous levels of Mob3C protein.
Formulation :	Liquid in PBS containing 50% glycerol, 0.5% BSA and 0.02% sodium azide.
Source :	Rabbit
Dilution :	Western Blot: 1/500 - 1/2000. Immunohistochemistry: 1/100 - 1/300. ELISA: 1/40000. Not yet tested in other applications.
Purification :	The antibody was affinity-purified from rabbit antiserum by affinity-chromatography using epitope-specific immunogen.
Concentration :	1 mg/ml
Storage_stability :	-20°C/1 year
Msds :	MSDS_Antibody.pdf
Other_name :	MOB3C; MOBKL2C; MOB kinase activator 3C; Mob1 homolog 2C; Mps one binder kinase activator-like 2C
Molecular	22KD

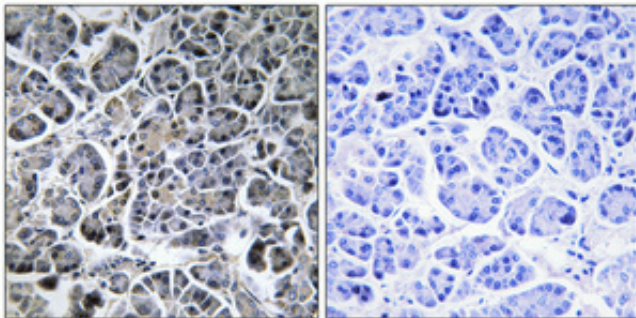


Weight :

Product Images



Western Blot analysis of RAW264.7 cells using Mob3C Polyclonal Antibody



Immunohistochemical analysis of paraffin-embedded Human pancreas. Antibody was diluted at 1:100(4°, overnight). High-pressure and temperature Tris-EDTA, pH8.0 was used for antigen retrieval. Negative control (right) obtained from antibody was pre-absorbed by immunogen peptide.