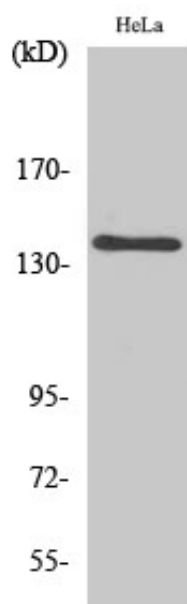


## MOV10L1 Polyclonal Antibody

Catalog_no :	AT2819
Applications :	WB,IHC-p,ELISA
Reactivity :	Human
Category :	抗原抗体
Size :	100µg/50µg/20µg
Gene_name :	MOV10L1
Protein_name :	Putative helicase Mov10l1
Humangene_id :	<a href="#">54456</a>
Humanswissprot_no :	<a href="#">Q9BXT6</a>
Immunogen :	The antiserum was produced against synthesized peptide derived from human MOV10L1. AA range:318-367
Specificity :	MOV10L1 Polyclonal Antibody detects endogenous levels of MOV10L1 protein.
Formulation :	Liquid in PBS containing 50% glycerol, 0.5% BSA and 0.02% sodium azide.
Source :	Rabbit
Dilution :	Western Blot: 1/500 - 1/2000. Immunohistochemistry: 1/100 - 1/300. ELISA: 1/5000. Not yet tested in other applications.
Purification :	The antibody was affinity-purified from rabbit antiserum by affinity-chromatography using epitope-specific immunogen.
Concentration :	1 mg/ml
Storage_stability :	-20°C/1 year
Msds :	MSDS_Antibody.pdf
Other_name :	MOV10L1; Putative helicase Mov10l1; Moloney leukemia virus 10-like protein 1; MOV10-like protein 1
Molecular Weight :	140KD

## Product Images



Western Blot analysis of various cells using MOV10L1 Polyclonal Antibody diluted at 1 : 500