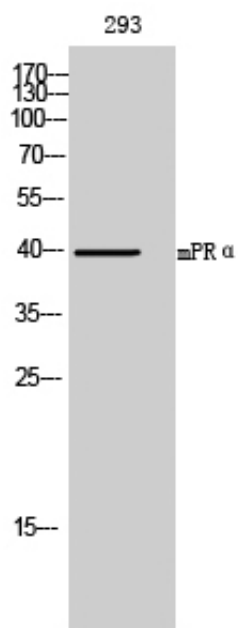


mPR α Polyclonal Antibody

Catalog_no :	AT2825
Applications :	WB,IF,ELISA
Reactivity :	Human
Category :	抗原抗体
Size :	100 μ g/50 μ g/20 μ g
Gene_name :	PAQR7
Protein_name :	Membrane progestin receptor alpha
Humangene_id :	164091
Humanswissprot_no :	Q86WK9
Immunogen :	The antiserum was produced against synthesized peptide derived from human MPRA. AA range:297-346
Specificity :	mPR α Polyclonal Antibody detects endogenous levels of mPR α protein.
Formulation :	Liquid in PBS containing 50% glycerol, 0.5% BSA and 0.02% sodium azide.
Source :	Rabbit
Dilution :	Western Blot: 1/500 - 1/2000. Immunofluorescence: 1/200 - 1/1000. ELISA: 1/5000. Not yet tested in other applications.
Purification :	The antibody was affinity-purified from rabbit antiserum by affinity-chromatography using epitope-specific immunogen.
Concentration :	1 mg/ml
Storage_stability :	-20°C/1 year
Msds :	MSDS_Antibody.pdf
Other_name :	PAQR7; MRPA; Membrane progestin receptor alpha; mPR alpha; Progestin and adipoQ receptor family member 7; Progestin and adipoQ receptor family member VII
Molecular Weight :	40KD

Product Images



Western Blot analysis of 293 cells using mPR α Polyclonal Antibody