

MRCK α Polyclonal Antibody

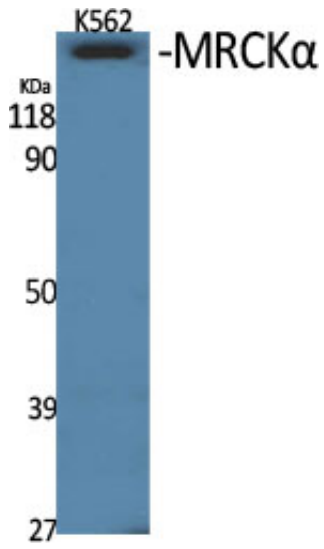
Catalog_no :	<u>AT2827</u>
Applications :	<u>WB,ELISA</u>
Reactivity :	<u>Human,Mouse,Rat</u>
Category :	<u>抗原抗体</u>
Size :	<u>100μg/50μg/20μg</u>
Gene_name :	<u>CDC42BPA</u>
Protein_name :	<u>Serine/threonine-protein kinase MRCK alpha</u>
Humangene_id	<u>8476</u>
:	
Humanswissprot	<u>Q5VT25</u>
_no :	
Mouseswissprot	<u>Q3UU96</u>
_no :	
Ratgene_id :	<u>114116</u>
Ratswissprot_no	<u>O54874</u>
:	
Immunogen :	<u>Synthesized peptide derived from the Internal region of human MRCKα.</u>
Specificity :	<u>MRCKα Polyclonal Antibody detects endogenous levels of MRCKα protein.</u>
Formulation :	<u>Liquid in PBS containing 50% glycerol, 0.5% BSA and 0.02% sodium azide.</u>
Source :	<u>Rabbit</u>
Dilution :	<u>Western Blot: 1/500 - 1/2000. ELISA: 1/40000. Not yet tested in other applications.</u>
Purification :	<u>The antibody was affinity-purified from rabbit antiserum by affinity-chromatography using epitope-specific immunogen.</u>
Concentration :	<u>1 mg/ml</u>
Storage_stability	<u>-20°C/1 year</u>
:	
Msds :	<u>MSDS_Antibody.pdf</u>
Other_name :	<u>CDC42BPA; KIAA0451; Serine/threonine-protein kinase MRCK alpha; CDC42-binding protein kinase alpha; DMPK-like alpha; Myotonic dystrophy kinase-related CDC42-binding kinase alpha; MRCK alpha; Myotonic dystrophy protein kinase-like alpha</u>



Molecular
Weight :

200KD

Product Images



Western Blot analysis of various cells using MRCK α Polyclonal Antibody