

MRCK $\beta$  Polyclonal Antibody

Catalog_no :	<u>AT2828</u>
Applications :	<u>WB,IHC-p,ELISA</u>
Reactivity :	<u>Human,Mouse,Rat</u>
Category :	<u>抗原抗体</u>
Size :	<u>100<math>\mu</math>g/50<math>\mu</math>g/20<math>\mu</math>g</u>
Gene_name :	<u>CDC42BPB</u>
Protein_name :	<u>Serine/threonine-protein kinase MRCK beta</u>
Humangene_id :	<u><a href="#">9578</a></u>
Humanswissprot_no :	<u><a href="#">Q9Y5S2</a></u>
Mousegene_id :	<u><a href="#">217866</a></u>
Mouseswissprot_no :	<u><a href="#">Q7TT50</a></u>
Ratgene_id :	<u><a href="#">113960</a></u>
Ratswissprot_no :	<u><a href="#">Q7TT49</a></u>
Immunogen :	<u>The antiserum was produced against synthesized peptide derived from human MRCKB. AA range:1641-1690</u>
Specificity :	<u>MRCK<math>\beta</math> Polyclonal Antibody detects endogenous levels of MRCK<math>\beta</math> protein.</u>
Formulation :	<u>Liquid in PBS containing 50% glycerol, 0.5% BSA and 0.02% sodium azide.</u>
Source :	<u>Rabbit</u>
Dilution :	<u>Western Blot: 1/500 - 1/2000. Immunohistochemistry: 1/100 - 1/300. ELISA: 1/40000. Not yet tested in other applications.</u>
Purification :	<u>The antibody was affinity-purified from rabbit antiserum by affinity-chromatography using epitope-specific immunogen.</u>
Concentration :	<u>1 mg/ml</u>
Storage_stability :	<u>-20°C/1 year</u>
Msds :	<u>MSDS_Antibody.pdf</u>



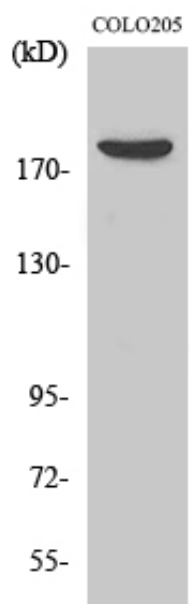
Other\_name : CDC42BPB; KIAA1124; Serine/threonine-protein kinase MRCK beta; CDC42-binding protein kinase beta; CDC42BP-beta; DMPK-like beta; Myotonic dystrophy kinase-related CDC42-binding kinase beta; MRCK beta; Myotonic dystrophy protein kinase-like b

---

Molecular Weight : 194KD

---

## Product Images



Western Blot analysis of various cells using MRCK $\beta$  Polyclonal Antibody