

MRG15 Polyclonal Antibody

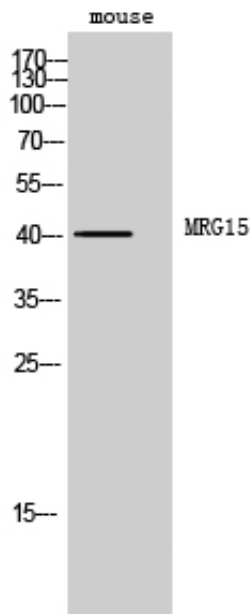
Catalog_no :	AT2831
Applications :	WB,IHC-p,IF,ELISA
Reactivity :	Human,Mouse
Category :	抗原抗体
Size :	100µg/50µg/20µg
Gene_name :	MORF4L1
Protein_name :	Mortality factor 4-like protein 1
Humangene_id :	10933
Humanswissprot_no :	Q9UBU8
Mousegene_id :	21761
Mouseswissprot_no :	P60762
Immunogen :	The antiserum was produced against synthesized peptide derived from human MORF4L1. AA range:31-80
Specificity :	MRG15 Polyclonal Antibody detects endogenous levels of MRG15 protein.
Formulation :	Liquid in PBS containing 50% glycerol, 0.5% BSA and 0.02% sodium azide.
Source :	Rabbit
Dilution :	Western Blot: 1/500 - 1/2000. Immunohistochemistry: 1/100 - 1/300. Immunofluorescence: 1/200 - 1/1000. ELISA: 1/20000. Not yet tested in other applications.
Purification :	The antibody was affinity-purified from rabbit antiserum by affinity-chromatography using epitope-specific immunogen.
Concentration :	1 mg/ml
Storage_stability :	-20°C/1 year
Msds :	MSDS_Antibody.pdf
Other_name :	MORF4L1; MRG15; FWP006; HSPC008; HSPC061; PP368; Mortality factor 4-like protein 1; MORF-related gene 15 protein; Protein MSL3-1; Transcription factor-like protein MRG15



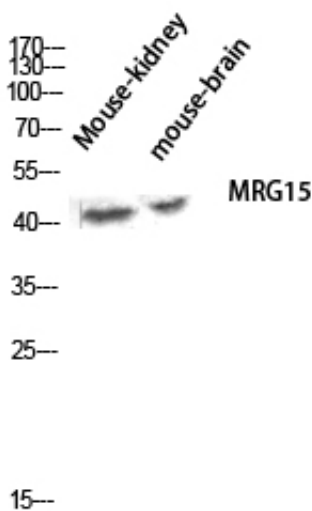
Molecular
Weight :

41KD

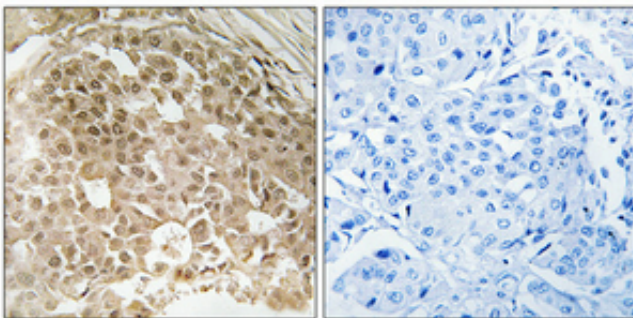
Product Images



Western Blot analysis of mouse cells using MRG15 Polyclonal Antibody diluted at 1 : 500 cells nucleus extracted by Minute TM Cytoplasmic and Nuclear Fractionation kit (SC-003, Inventbiotech, MN, USA).



Western blot analysis of Mouse-kidney mouse-brain lysis using MRG15 antibody. Antibody was diluted at 1:500 cells nucleus extracted by Minute TM Cytoplasmic and Nuclear Fractionation kit (SC-003, Inventbiotech, MN, USA).



Immunohistochemical analysis of paraffin-embedded Human breast cancer. Antibody was diluted at 1:100 (4°, overnight). High-pressure and temperature Tris-EDTA, pH 8.0 was used for antigen retrieval. Negative control (right) obtained from antibody was pre-absorbed by immunogen peptide.