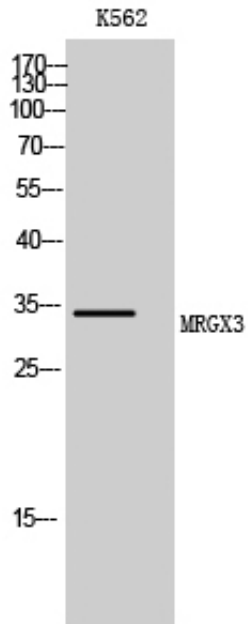




MRGX3 Polyclonal Antibody

Catalog_no :	AT2836
Applications :	WB,IF,ELISA
Reactivity :	Human
Category :	抗原抗体
Size :	100µg/50µg/20µg
Gene_name :	MRGPRX3
Protein_name :	Mas-related G-protein coupled receptor member X3
Humangene_id :	117195
Humanswissprot_no :	Q96LB0
Immunogen :	The antiserum was produced against synthesized peptide derived from human MRGX3. AA range:99-148
Specificity :	MRGX3 Polyclonal Antibody detects endogenous levels of MRGX3 protein.
Formulation :	Liquid in PBS containing 50% glycerol, 0.5% BSA and 0.02% sodium azide.
Source :	Rabbit
Dilution :	Western Blot: 1/500 - 1/2000. Immunofluorescence: 1/200 - 1/1000. ELISA: 1/10000. Not yet tested in other applications.
Purification :	The antibody was affinity-purified from rabbit antiserum by affinity-chromatography using epitope-specific immunogen.
Concentration :	1 mg/ml
Storage_stability :	-20°C/1 year
Msds :	MSDS_Antibody.pdf
Other_name :	MRGPRX3; MRGX3; SNSR1; SNSR2; Mas-related G-protein coupled receptor member X3; Sensory neuron-specific G-protein coupled receptor 1/2
Molecular Weight :	34KD

Product Images



Western Blot analysis of K562 cells using MRGX3 Polyclonal Antibody