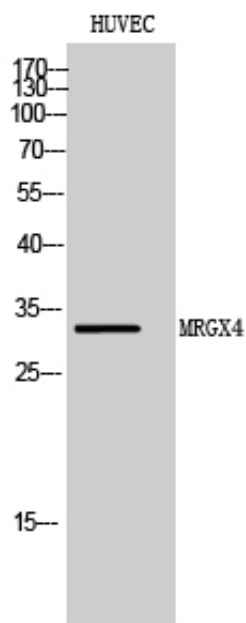




MRGX4 Polyclonal Antibody

| | |
|---------------------|--|
| Catalog_no : | AT2837 |
| Applications : | WB,IF,ELISA |
| Reactivity : | Human |
| Category : | 抗原抗体 |
| Size : | 100µg/50µg/20µg |
| Gene_name : | MRGPRX4 |
| Protein_name : | Mas-related G-protein coupled receptor member X4 |
| Humangene_id : | 117196 |
| Humanswissprot_no : | Q96LA9 |
| Immunogen : | The antiserum was produced against synthesized peptide derived from human MRGX4. AA range:271-320 |
| Specificity : | MRGX4 Polyclonal Antibody detects endogenous levels of MRGX4 protein. |
| Formulation : | Liquid in PBS containing 50% glycerol, 0.5% BSA and 0.02% sodium azide. |
| Source : | Rabbit |
| Dilution : | Western Blot: 1/500 - 1/2000. Immunofluorescence: 1/200 - 1/1000. ELISA: 1/40000. Not yet tested in other applications. |
| Purification : | The antibody was affinity-purified from rabbit antiserum by affinity-chromatography using epitope-specific immunogen. |
| Concentration : | 1 mg/ml |
| Storage_stability : | -20°C/1 year |
| Msds : | MSDS_Antibody.pdf |
| Other_name : | MRGPRX4; MRGX4; SNSR5; SNSR6; Mas-related G-protein coupled receptor member X4; Sensory neuron-specific G-protein coupled receptor 5/6 |
| Molecular Weight : | 33KD |

Product Images



Western Blot analysis of HUVEC cells using MRGX4 Polyclonal Antibody