

MRLC2 Polyclonal Antibody

Catalog_no :	AT2839
Applications :	WB,IHC-p,IF,ELISA
Reactivity :	Human,Mouse,Rat
Category :	抗原抗体
Size :	100µg/50µg/20µg
Gene_name :	MLRN
Protein_name :	Myosin regulatory light polypeptide 9
Humangene_id :	10398/10627
Humanswissprot_no :	P24844/P19105
Mousegene_id :	98932
Ratgene_id :	296313
Ratswissprot_no :	Q64122
Immunogen :	The antiserum was produced against synthesized peptide derived from human MRLC2. AA range:3-52
Specificity :	MRLC2 Polyclonal Antibody detects endogenous levels of MRLC2 protein.
Formulation :	Liquid in PBS containing 50% glycerol, 0.5% BSA and 0.02% sodium azide.
Source :	Rabbit
Dilution :	Western Blot: 1/500 - 1/2000. Immunohistochemistry: 1/100 - 1/300. Immunofluorescence: 1/200 - 1/1000. ELISA: 1/20000. Not yet tested in other applications.
Purification :	The antibody was affinity-purified from rabbit antiserum by affinity-chromatography using epitope-specific immunogen.
Concentration :	1 mg/ml
Storage_stability :	-20°C/1 year
Msds :	MSDS_Antibody.pdf
Other_name :	MYL9; MLC2; MRLC1; MYRL2; Myosin regulatory light polypeptide 9; 20 kDa myosin light

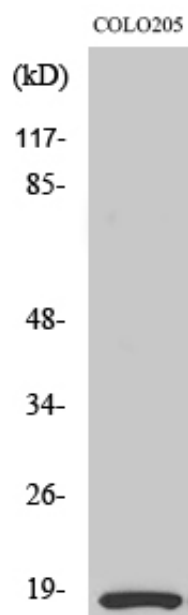


chain; LC20; MLC-2C; Myosin RLC; Myosin regulatory light chain 2; smooth muscle isoform; Myosin regulatory light chain 9; Myosin regulatory light chain MRL

Molecular Weight :

18KD

Product Images



Western Blot analysis of various cells using MRLC2 Polyclonal Antibody