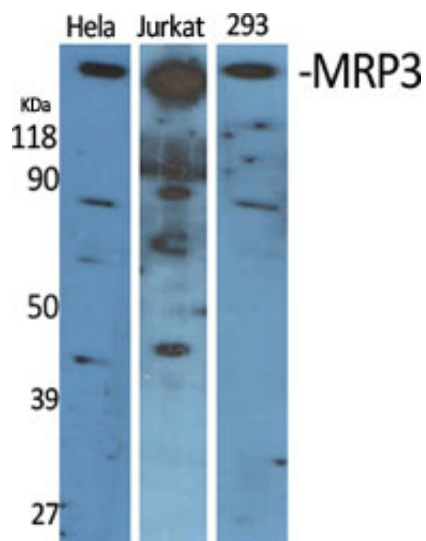


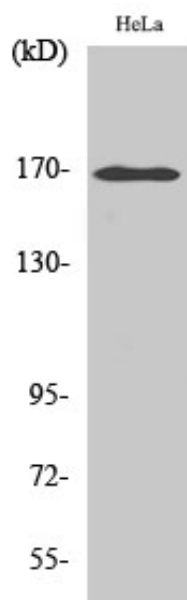
## MRP3 Polyclonal Antibody

Catalog_no :	AT2841
Applications :	WB,ELISA
Reactivity :	Human
Category :	抗原抗体
Size :	100µg/50µg/20µg
Gene_name :	ABCC3
Protein_name :	Canalicular multispecific organic anion transporter 2
Humangene_id :	<a href="#">8714</a>
Humanswissprot_no :	<a href="#">O15438</a>
Immunogen :	The antiserum was produced against synthesized peptide derived from human ABCC3. AA range:971-1020
Specificity :	MRP3 Polyclonal Antibody detects endogenous levels of MRP3 protein.
Formulation :	Liquid in PBS containing 50% glycerol, 0.5% BSA and 0.02% sodium azide.
Source :	Rabbit
Dilution :	Western Blot: 1/500 - 1/2000. ELISA: 1/5000. Not yet tested in other applications.
Purification :	The antibody was affinity-purified from rabbit antiserum by affinity-chromatography using epitope-specific immunogen.
Concentration :	1 mg/ml
Storage_stability :	-20°C/1 year
Msds :	MSDS_Antibody.pdf
Other_name :	ABCC3; CMOAT2; MLP2; MRP3; Canalicular multispecific organic anion transporter 2; ATP-binding cassette sub-family C member 3; Multi-specific organic anion transporter D; MOAT-D; Multidrug resistance-associated protein 3
Molecular Weight :	170KD

## Product Images



Western Blot analysis of various cells using MRP3 Polyclonal Antibody diluted at 1 : 2000



Western Blot analysis of HepG2 cells using MRP3 Polyclonal Antibody diluted at 1 : 2000