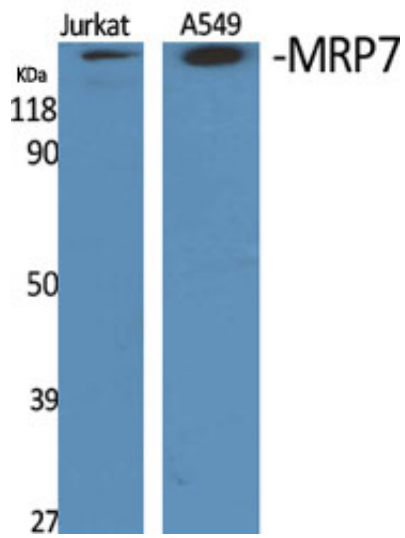


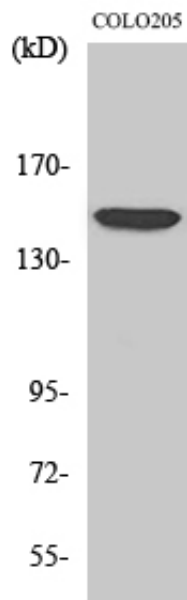
MRP7 Polyclonal Antibody

Catalog_no :	AT2842
Applications :	WB,ELISA
Reactivity :	Human,Monkey
Category :	抗原抗体
Size :	100µg/50µg/20µg
Gene_name :	ABCC10
Protein_name :	Multidrug resistance-associated protein 7
Humangene_id :	89845
Humanswissprot_no :	Q5T3U5
Immunogen :	The antiserum was produced against synthesized peptide derived from human MRP7. AA range:835-884
Specificity :	MRP7 Polyclonal Antibody detects endogenous levels of MRP7 protein.
Formulation :	Liquid in PBS containing 50% glycerol, 0.5% BSA and 0.02% sodium azide.
Source :	Rabbit
Dilution :	Western Blot: 1/500 - 1/2000. ELISA: 1/40000. Not yet tested in other applications.
Purification :	The antibody was affinity-purified from rabbit antiserum by affinity-chromatography using epitope-specific immunogen.
Concentration :	1 mg/ml
Storage_stability :	-20°C/1 year
Msds :	MSDS_Antibody.pdf
Other_name :	ABCC10; MRP7; SIMRP7; Multidrug resistance-associated protein 7; ATP-binding cassette sub-family C member 10
Molecular Weight :	162KD

Product Images



Western Blot analysis of various cells using MRP7
Polyclonal Antibody diluted at 1 : 1000



Western Blot analysis of COS7 cells using MRP7
Polyclonal Antibody diluted at 1 : 1000