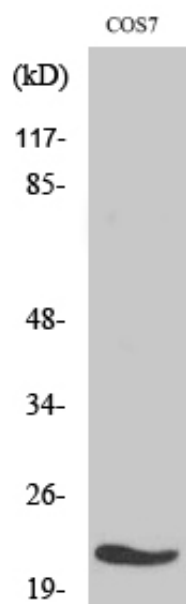




MRP-L11 Polyclonal Antibody

Catalog_no :	AT2844
Applications :	WB,IHC-p,IF,ELISA
Reactivity :	Human,Monkey
Category :	抗原抗体
Size :	100µg/50µg/20µg
Gene_name :	MRPL11
Protein_name :	39S ribosomal protein L11 mitochondrial
Humangene_id :	65003
Humanswissprot_no :	Q9Y3B7
Immunogen :	The antiserum was produced against synthesized peptide derived from human MRPL11. AA range:21-70
Specificity :	MRP-L11 Polyclonal Antibody detects endogenous levels of MRP-L11 protein.
Formulation :	Liquid in PBS containing 50% glycerol, 0.5% BSA and 0.02% sodium azide.
Source :	Rabbit
Dilution :	Western Blot: 1/500 - 1/2000. Immunohistochemistry: 1/100 - 1/300. Immunofluorescence: 1/200 - 1/1000. ELISA: 1/40000. Not yet tested in other applications.
Purification :	The antibody was affinity-purified from rabbit antiserum by affinity-chromatography using epitope-specific immunogen.
Concentration :	1 mg/ml
Storage_stability :	-20°C/1 year
Msds :	MSDS_Antibody.pdf
Other_name :	MRPL11; CGI-113; 39S ribosomal protein L11; mitochondrial; L11mt; MRP-L11
Molecular Weight :	21KD

Product Images



Western Blot analysis of various cells using MRP-L11
Polyclonal Antibody diluted at 1 : 500