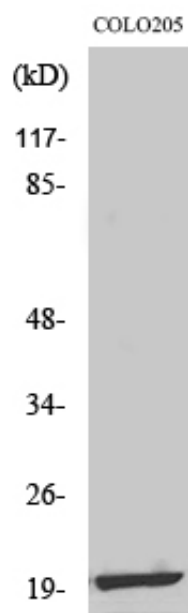




## MRP-L12 Polyclonal Antibody

Catalog_no :	AT2845
Applications :	WB,ELISA
Reactivity :	Human,Mouse
Category :	抗原抗体
Size :	100µg/50µg/20µg
Gene_name :	MRPL12
Protein_name :	39S ribosomal protein L12 mitochondrial
Humangene_id :	<a href="#">6182</a>
Humanswissprot_no :	<a href="#">P52815</a>
Mousegene_id :	<a href="#">56282</a>
Mouseswissprot_no :	<a href="#">Q9DB15</a>
Immunogen :	The antiserum was produced against synthesized peptide derived from human MRPL12. AA range:31-80
Specificity :	MRP-L12 Polyclonal Antibody detects endogenous levels of MRP-L12 protein.
Formulation :	Liquid in PBS containing 50% glycerol, 0.5% BSA and 0.02% sodium azide.
Source :	Rabbit
Dilution :	Western Blot: 1/500 - 1/2000. ELISA: 1/40000. Not yet tested in other applications.
Purification :	The antibody was affinity-purified from rabbit antiserum by affinity-chromatography using epitope-specific immunogen.
Concentration :	1 mg/ml
Storage_stability :	-20°C/1 year
Msds :	<a href="#">MSDS_Antibody.pdf</a>
Other_name :	MRPL12; RPML12; 39S ribosomal protein L12; mitochondrial; L12mt; MRP-L12; 5c5-2
Molecular Weight :	21KD

## Product Images



Western Blot analysis of various cells using MRP-L12 Polyclonal Antibody