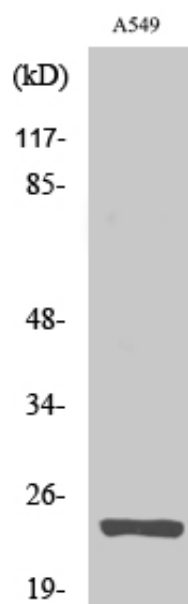


MRP-L13 Polyclonal Antibody

Catalog_no :	AT2846
Applications :	WB,IHC-p,ELISA
Reactivity :	Human,Mouse,Rat
Category :	抗原抗体
Size :	100µg/50µg/20µg
Gene_name :	MRPL13
Protein_name :	39S ribosomal protein L13 mitochondrial
Humangene_id :	28998
Humanswissprot_no :	Q9BYD1
Mousegene_id :	68537
Mouseswissprot_no :	Q9D1P0
Immunogen :	The antiserum was produced against synthesized peptide derived from human MRPL13. AA range:121-170
Specificity :	MRP-L13 Polyclonal Antibody detects endogenous levels of MRP-L13 protein.
Formulation :	Liquid in PBS containing 50% glycerol, 0.5% BSA and 0.02% sodium azide.
Source :	Rabbit
Dilution :	Western Blot: 1/500 - 1/2000. Immunohistochemistry: 1/100 - 1/300. ELISA: 1/40000. Not yet tested in other applications.
Purification :	The antibody was affinity-purified from rabbit antiserum by affinity-chromatography using epitope-specific immunogen.
Concentration :	1 mg/ml
Storage_stability :	-20°C/1 year
Msds :	MSDS_Antibody.pdf
Other_name :	MRPL13; 39S ribosomal protein L13; mitochondrial; L13mt; MRP-L13
Molecular Weight :	24KD



Product Images



Western Blot analysis of various cells using MRP-L13 Polyclonal Antibody diluted at 1 : 1000