

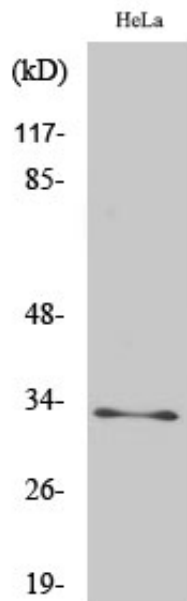
MRP-L15 Polyclonal Antibody

Catalog_no :	AT2848
Applications :	WB,IHC-p,IF,ELISA
Reactivity :	Human,Mouse
Category :	抗原抗体
Size :	100µg/50µg/20µg
Gene_name :	MRPL15
Protein_name :	39S ribosomal protein L15 mitochondrial
Humangene_id :	29088
Humanswissprot_no :	Q9P015
Mousegene_id :	27395
Mouseswissprot_no :	Q9CPR5
Immunogen :	The antiserum was produced against synthesized peptide derived from human MRPL15. AA range:191-240
Specificity :	MRP-L15 Polyclonal Antibody detects endogenous levels of MRP-L15 protein.
Formulation :	Liquid in PBS containing 50% glycerol, 0.5% BSA and 0.02% sodium azide.
Source :	Rabbit
Dilution :	Western Blot: 1/500 - 1/2000. Immunohistochemistry: 1/100 - 1/300. Immunofluorescence: 1/200 - 1/1000. ELISA: 1/40000. Not yet tested in other applications.
Purification :	The antibody was affinity-purified from rabbit antiserum by affinity-chromatography using epitope-specific immunogen.
Concentration :	1 mg/ml
Storage_stability :	-20°C/1 year
Msds :	MSDS_Antibody.pdf
Other_name :	MRPL15; HSPC145; 39S ribosomal protein L15; mitochondrial; L15mt; MRP-L15
Molecular	33KD

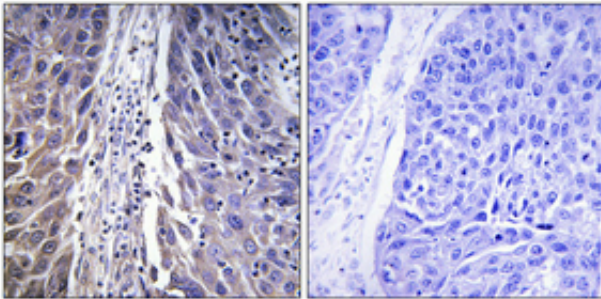


Weight :

Product Images



Western Blot analysis of various cells using MRP-L15 Polyclonal Antibody



Immunohistochemical analysis of paraffin-embedded Human lung cancer. Antibody was diluted at 1:100(4°, overnight). High-pressure and temperature Tris-EDTA, pH8.0 was used for antigen retrieval. Negative control (right) obtained from antibody was pre-absorbed by immunogen peptide.