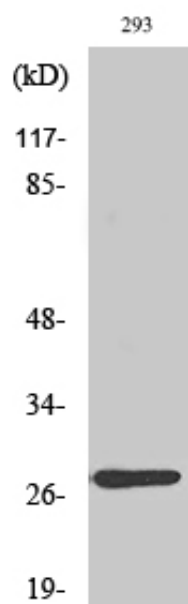




MRP-L16 Polyclonal Antibody

Catalog_no :	AT2849
Applications :	WB,IHC-p,ELISA
Reactivity :	Human
Category :	抗原抗体
Size :	100µg/50µg/20µg
Gene_name :	MRPL16
Protein_name :	39S ribosomal protein L16 mitochondrial
Humangene_id :	54948
Humanswissprot_no :	Q9NX20
Immunogen :	The antiserum was produced against synthesized peptide derived from human MRPL16. AA range:171-220
Specificity :	MRP-L16 Polyclonal Antibody detects endogenous levels of MRP-L16 protein.
Formulation :	Liquid in PBS containing 50% glycerol, 0.5% BSA and 0.02% sodium azide.
Source :	Rabbit
Dilution :	Western Blot: 1/500 - 1/2000. Immunohistochemistry: 1/100 - 1/300. ELISA: 1/40000. Not yet tested in other applications.
Purification :	The antibody was affinity-purified from rabbit antiserum by affinity-chromatography using epitope-specific immunogen.
Concentration :	1 mg/ml
Storage_stability :	-20°C/1 year
Msds :	MSDS_Antibody.pdf
Other_name :	MRPL16; PNAS-111; 39S ribosomal protein L16; mitochondrial; L16mt; MRP-L16
Molecular Weight :	28KD

Product Images



Western Blot analysis of various cells using MRP-L16 Polyclonal Antibody diluted at 1 : 2000